

GENEROSITY
in Action



20
14



Edmonton Community Foundation

Introduction

Welcome to *Generosity in Action 2014* where you will find Edmonton Community Foundation's financial highlights from its 25th anniversary year. This report shows more than just the numbers; in conjunction with our *Legacy in Action* magazine you will see how we connect our donors with the Edmonton community to help weave the social fabric of our city through their generous support. From arts and education to health and wellness, *Generosity in Action* is a celebration of our donors' vision of a great city.

Through our donor's generous support, ECF was able to grant more than \$16.7 million in 2014 including 25 one-time grants of \$25,000 each in honour of our silver anniversary. Here are a few of the organizations ECF was able to help:

- **Boyle McCauley Health Centre - \$25,000**
Funding will support part-time staff needs for the Hepatitis C Program at Boyle McCauley Health Centre to allow clients who are not comfortable accessing treatment in mainstream programs to see a nurse on-site. The program allows people to complete their treatment regime which often has side-effects that are uncomfortable and difficult to manage.
- **Bent Arrow Traditional Healing Society - \$40,000**
Funds will be used to purchase a school bus for the White Cloud Head Start Program; a program designed to support Aboriginal preschoolers with a positive sense of themselves, their culture, and opportunity for them to develop the skills to be successful in the school system. The bus will help families overcome a key barrier to participation.
- **Wildlife Rehabilitation Society - \$25,000**
Funding will support the Wildlife Hotline and Education Program, which provides invaluable information to the community ensuring reduced public and wildlife injury as well as education on the importance of wildlife in our community.
- **Edmonton Symphony Society - \$40,000**
Youth Orchestra of Northern Alberta Sistema (YONA-Sistema), a pilot project of the Edmonton Symphony, will receive funding to support personnel and teaching artists. This program engages children in underserved communities with intensive musical ensemble participation, building confidence, leadership skills, and social skills.

For a full listing of our 2014 grants please visit our website for *Granting in Action*.

Last year saw more than \$19.4 Million contributed to funds at ECF including 83 new funds that opened in 2014. This is an incredible investment in the future of our community. A full donor listing booklet is also available online.

These funds are stewarded by ECF's Board, investment counsellors, and staff. You can find all of our funds listed throughout this booklet.

If you would like to review the full set of financial statements or any of our documents, they are available on our website, or if you do not have internet access we would be happy to mail them to you. Just give us a call.

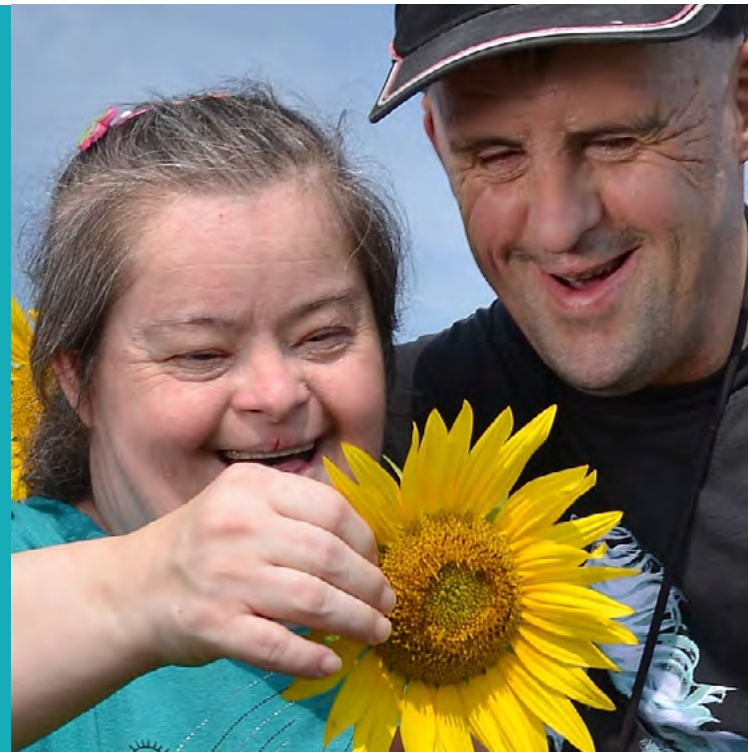
www.ecfoundation.org 780.426.0015



Edmonton Community Foundation

TABLE OF CONTENTS

INTRODUCTION	1
FUNDS	4
GIFTS PLANNED FOR THE FUTURE	32
FINANCIAL HIGHLIGHTS	34
BOARD & INVESTMENT COMMITTEE LIST	37
INVESTMENT COUNSELLORS	37



TIMELESS CONTRIBUTIONS

Endless Possibilities

At Edmonton Community Foundation (ECF), there are several options to choose from when you're deciding how to allocate your charitable giving. We offer a variety of fund types that reflect the unique wishes of our donors.

SMART AND CARING COMMUNITY FUNDS

By making a gift to ECF's "Smart and Caring Community Funds," donors support the emerging priority needs in our community. ECF's Board, with advice and support from staff and our advisory committees, allocates amounts to support the community's highest priorities whether in arts, culture and heritage; education and learning; health and wellness; community and social services; recreation and leisure; or the environment.

Smart and Caring Community Funds	Year End Balance
Allen Fund	1,875,871
Heinrich & Lina Aulbach Fund	18,474
Betty Kathleen Brown Fund	79,690
Christopher & Lisa Cairns & Family Fund	17,766
Jo-Ann Campbell Fund	14,371
Collinge Fund	11,842
John A. Cunningham Fund	10,472
Archibald Hadley Dickson Memorial Fund	254,084
Duggan Family Centennial Fund	30,405
Eric Geddes Memorial Fund	13,362
General Community Fund	18,950,073
Governor General's Smart & Caring Community Fund	22,904
Scott Graham Community Fund	23,968
Dorothy Guilday Fund	399,999
Alex Hamilton Family Fund	203,937
Mich & Thorey Johnston Fund	30,758
Sophia Kinasevich Memorial Fund	11,051
Lorne & Kathie Leitch Family Fund	18,610
McLennan Ross Fund	13,409
Memorial Tribute Fund	144,823
Miller Office Group Fund	17,779
Thomas Olenuk Community Fund	144,234

Smart and Caring Community Funds (continued)	Year End Balance
Otteson Family Fund	12,357
Barbara C. Poole Memorial Fund	21,457
John E. Poole Memorial Fund	38,099
Princeton Fund	45,339
David W. Purvis Fund	2,107,593
Robert David Purvis Memorial Fund	147,590
John Slatter Memorial Fund	30,607
Total: Community Funds	24,710,922

FIELD OF INTEREST FUNDS

Donors can direct their gifts to a personal field of interest to support important areas of community life. ECF's Board awards grants to community groups and programs that are making a difference in many ways.

Field of Interest Funds	Year End Balance
Aboriginal Services Fund	11,311
Alberta Association of Fundraising Executives (AAFRE) Fund	53,846
Alberta Orange Foundation for Children Fund	489,816
David & Aline Bell Memorial Fund	32,761
Bishop & McKenzie Centennial Fund	101,267
Branches of Life Fund	36,833
Capital Region Beautification Fund	10,877
Jack & Sylvia Chetner Fund	26,364
Richard Cook & Wendy Cook Fund	27,202
John Crockett Memorial Fund	35,388
Ken Crockett Music Fund	23,667
Feeding Hungry Minds Fund	40,909
Garber-Conrad Family Fund	14,394
Gaunce Family Fund	33,084
Governor General's Smart & Caring Creative Edmonton Fund	67,245
Elizabeth Gredley Humane Education Fund	157,859
The GYRO Club of Edmonton Fund	34,966
Harvonen Family Fund for Young Children	17,335
Hawkesworth/Kriviak Family Fund	20,184
Heads Up Fraud Prevention/Fugi Saito Endowment Fund	25,559
Lois Hole Care & Nurture Legacy Fund	294,505
John & Jane Holmlund Family Fund	60,917

Field of Interest Funds (continued)	Year End Balance
Johanna & Otto Holzapfel Fund	94,568
Barbara Leah Fund	156,732
Lee Community Playspace Fund	528,125
Louis Lieberman Family Fund	35,076
Make a Dream Come True (Lions) Society Fund	41,013
H. Jean McDiarmid Fund for Musical Performance	1,960,069
Lilly Mueller Fund	107,283
Nick Ochotta Fund	128,913
George & Rae Poole Bequest Fund	1,355,243
John & Barbara Poole Campership Fund	103,981
Bunny Casper Rae Fund	1,766,815
Phyllis Ritchie Fund	179,772
Rosalie & William Rector Fund	372,843
Sydney Blair Rombough Memorial Fund	43,655
Peter Shertel Fund	579,247
Single Parents Independence Fund	168,509
Special Arts Fund	1,819,773
Stollery Fund	4,562,232
Treleaven-Tymofichuk Family Fund	64,799
Pearl & Thomas Wearmouth Fund	55,911
Anne & Peter Wightman Fund	30,918
Jennifer Wolfe Fund	84,803
Yez Family Fund	16,103
Linda M. Youell and Gerald W. Youell Fund for the Arts	20,264
Families of Field of Interest Funds	
<i>Alberta Dental Association & College Funds</i>	
Alberta Dental Association and College Community Assistance Fund	224,902
Donald Winget Fund	16,459
Young Edmonton Grants (YEG) Funds	
Young Edmonton Grants (YEG) Endowment Fund	354,197
Young Edmonton Grants (YEG) Flow-through Fund	76,508
Total: Field of Interest Funds	16,565,004

DESIGNATED FUNDS

These funds identify a specific charity or charities to receive support every year. Agreements for designated funds include planning for the inevitable changes that take place over long periods of time so the funds remain meaningful, effective and robust.

Designated Funds	Year End Balance
A.I.R.S. Fund	72,158
Alberta Legacy Development Society Fund	16,455
Alberta Legal Heritage Fund	148,527
Alberta Literacy Foundation Fund	12,506
Alberta Search & Rescue Fund	19,864
Anchor Fund	11,361
Anonymous	15,522
Anonymous	23,606
Another Chance Fund	10,765
Art Gallery of Alberta Fund	2,903,390
Milton Bablitz Memorial Fund	26,647
Robert A. & Maria Bailey Hope for Haiti Fund	18,250
Banff Centre Fund	6,059
Clinton Bardell Fund	32,467
Amina Beecroft Fund	236,498
Helen & Laurel Bell Fund	152,613
Helen & Fred Bentley Planned Parenthood Edmonton Fund	410,364
Helen & Fred Bentley Planned Parenthood Federation of Canada Fund	440,731
Gay Bisanz Leadership Development Fund	34,130
June Block People in Need Fund	109,176
June Block Talking Clocks Fund	234,401
Boyle-McCauley Health Centre Fund	185,967
Boys' & Girls' Clubs of Alberta Endowment Fund	38,633
Boys' & Girls' Clubs of Edmonton Fund	249,544
Buchkowsky Family Charitable Fund	12,200
Kathryn Burke Endowment Fund	25,000
Ralph Buttner Memorial Fund	70,995
Douglas Milton Campbell Estate Fund	815,575
Margaret Campbell Fund	226,611
Canadian Parks & Wilderness Society Fund for Alberta	304,180
Canadian Red Cross Society Fund	119,163
Canterbury Foundation Legacy Fund	204,095
Irene Lenore Carter Endowment Fund	329,327

Designated Funds (continued)	Year End Balance
CEASE Fund	16,132
Cecilia Fund	128,335
Central Baptist Church Missions Fund	309,412
Centre for Spiritual Living Teen Endowment Fund	21,015
Cerebral Palsy Associations in Alberta Fund	459,017
Christmas Bureau of Edmonton Fund	11,111
Cityfarm Fund	28,999
Vince Clarke Memorial Fund	10,512
Cosmopolitan Music Society Endowment Fund	22,955
Cunningham AnimalCare Fund	454,972
Frank Philip Davis Fund	12,061
Delaney-Chapple Support Network Fund	60,997
Dogs with Wings Fund	15,369
Patricia Dougherty Memorial Fund	12,689
Edmonton Chamber Music Society Fund	35,095
Edmonton Down Syndrome Society Fund	101,075
Edmonton Gleaners Association Fund	56,255
Edmonton Heritage Festival Endowment Fund	24,931
Edmonton Musical Theatre Fund	31,239
Edmonton Oilers Community Foundation Emma Bailey Memorial Fund	40,106
Edmonton YMCA Foundation Fund	39,101
Joy Eisert Habitat Lands Fund	45,893
Leta Gene Eisert Miquelon Lake Wildlands Sanctuary Fund	46,913
Andy & Marianne Elder Fund	59,976
Electro Equinology Fund	113,474
Cheryl Escott Memorial Fund	16,032
Family Centre Fund	1,333,299
Field Fund for Science Education	134,716
Fitzsimmons Family Fund	37,659
Ed & Rita Foy Memorial Fund	914,785
Friends of Jasper National Park Association Fund	14,779
Gift of Yoga Fund	50,475
Glenrose Rehabilitation Hospital Fund	144,728
Dr. Dasha Goody Memorial Fund	14,098
Goudreau Fund	32,238
Grant MacEwan University Foundation Fund	41,318
Growing Early Minds Fund	29,914
HIV Edmonton Endowment Fund	13,376
K. Janet Hughes Fund	25,569

Designated Funds (continued)	Year End Balance
Institute for Stuttering Treatment & Research (ISTAR) Fund	27,208
Dianne & Irving Kipnes Emerging Artist Fund	11,234
Bishop Stephen P. Kristenson Seminarian Endowment Fund	351,378
Frank & Dollie Leah Memorial Fund	97,138
Leduc/Devon Oilfield Historical Society Fund	98,435
Olga Lentz Memorial Fund	17,395
Lingle Educational Endowment Fund	18,413
Lions Seniors Centres - Jack & Fran Thomas Fund	103,456
Victor C. Love Memorial Fund	21,445
Lucy Baker School Society Fund	13,613
Peter & Dorothea Macdonnell Fund	317,329
Florence MacKenzie Fund	1,401,888
Fraser Malcolm Fund	45,903
Doris Louise (Belt) Marcum Family Fund	12,405
Rose McAllister and Deanna Nemirsky Old Friends Fund	35,281
Mary & Steve McEachern Fund	19,492
George & Lilian McEwen Family Fund	43,596
John Douglas McGavin Fund	743,248
Letha McKee Fund	53,292
Memorial (Brewster) Fund	89,336
Margaret Michaud Family Fund	12,906
Margaret Michaud Fund	11,468
Mile Zero Dance Endowment Fund	21,736
Mustard Seed (Edmonton) Fund	144,483
NAIT Scholarship & Bursary Fund	100,966
Native Cultural Awareness Fund	26,138
Nature Conservancy of Canada Fund	1,204,251
Options Sexual Health Association Fund	19,709
Orchid Species Preservation Foundation Endowment Fund	14,846
Our House Addiction Recovery Endowment Fund	13,037
Kathleen Pearson Fund	89,311
Brian Penner Fund	57,659
Roy A. Phillion Fund	29,692
PLAN Edmonton Fund	77,568
George & Rae Poole Fund	4,468,714
Pro Coro Canada Choir Fund	33,019
Reinhart Family Endowment Fund	15,440
Alison B. Rice Endowment for Edmonton Inner City Housing Society	1,047,668
Gene Robb Fund	244,346

Designated Funds (continued)	Year End Balance
Roper Fund	194,754
Royal Alexandra Hospital Fund	33,827
Frank & Ethel (Weisbeck) Rusconi Fund	3,080,929
Bill & Susan Sadler Fund	22,593
Susan & Peter Scott Fund	11,308
Albin J.E. Shanley Fund	21,413
Simonson Family Fund	16,768
SKILLS Society Fund	191,917
Slatter Family Fund	169,978
Linda Stanier & Family Memorial Award Fund	41,538
STARS Alberta Shock Trauma Air Rescue Foundation Fund	68,088
Audrey Stechynsky Fund	200,794
Marg Stephen Legacy Fund	20,671
Stollery Children's Hospital Foundation Fund	62,614
David & Marlene Stratton Fund	56,391
Sylvia Syska Fund	797,141
Barb Tarbox Legacy Fund	20,956
Teen Time of Edmonton Fund	39,688
Hazel F. Teskey Memorial Trust Fund	14,379
University Hospitals Foundation Fund	142,721
Valley Zoo Development Society Fund	115,631
Wally & Rosanna Kids to Kamp Fund	26,889
Kaitlyn Walsh Memorial Fund	96,865
Walterdale Theatre Associates Fund	18,675
Ross & Eleanor Wein Family Disabilities Transportation Fund	29,337
Westend Seniors Activity Centre Endowment Fund	27,154
Wings of Providence Laurette Braconnier Tribute Fund	75,498

FAMILIES OF DESIGNATED FUNDS

ABC HEAD START SOCIETY FUNDS

ABC Head Start Society Fund	309,789
Kathy Lenihan Fund	11,718

ALBERTA BALLET FUNDS

Alberta Ballet Fund	1,196,333
Canada Cultural Investment Fund for Alberta Ballet ¹	669,539

ALBERTA BAROQUE ENSEMBLE FUNDS

Alberta Baroque Ensemble Endowment Fund	217,601
Alberta Baroque Ensemble Enhancement Fund	62,202
Kathy Hogan Memorial Fund	15,375
Catharinus Huyer Principal Second Violin Fund	16,203

Designated Funds (continued)

Designated Funds (continued)	Year End Balance
ALBERTA CANCER FOUNDATION FUNDS	
Alberta Cancer Foundation Fund	75,057
Edmonds Family Fund	136,228
George C. Field Memorial Fund	227,423
Karen Sharpe Memorial Fund	3,679
Bob Tarr Memorial Fund	93,122

ALBERTA COMMITTEE OF CITIZENS WITH DISABILITIES FUNDS

Alberta Committee of Citizens with Disabilities Endowment Fund	10,727
Donald Gordon McArthur Fund	63,540

ALBERTA EMERALD FOUNDATION FUNDS

Alberta Emerald Foundation Endowment Fund	37,096
Alberta Emerald Foundation Fund	515,155

BISSELL CENTRE FUNDS

Bissell Fund	416,199
Elizabeth McBride Fund	69,824
John & Barbara Poole Fund for Bissell Centre	31,675

BOW VALLEY COMMUNITY FUNDS

Banff Alpine Racers Fund	86,748
Bow Valley Community Fund	12,383
Bow Valley Community Foundation Operating Endowment Fund	12,383
Lamphouse Endowment for the Arts	133,151
Rockies Ride for Kids Foundation	306,994

BRIAN WEBB DANCE COMPANY FUNDS

Brian Webb Dance Company Fund	121,128
Canada Cultural Investment Fund for the Brian Webb Dance Company ¹	109,632

CAMP HEALTH HOPE & HAPPINESS SOCIETY FUNDS

Camp Health Hope & Happiness Society Fund	338,450
Kiwanis Club of Edmonton Downtown Fund	12,510
Hugh & Madge McColl Camp Fund	60,588

CANMORE & AREA HEALTH CARE FOUNDATION FUNDS

Anonymous Fund #17	93,820
Canmore & Area Health Care Foundation Fund	529,009
Canmore Connection Charity Golf Fund	33,541
Murrieta's Charitable Fund	12,154

Designated Funds (continued)	Year End Balance
CAPITAL CARE FOUNDATION FUNDS	
Capital Care Foundation Fund	69,731
Hawrelak-Porter Family for CapitalCare Fund	24,503
Dorothy and David McBean for CapitalCare Fund	14,956
CARITAS HOSPITALS FOUNDATION FUNDS	
Caritas Hospitals Foundation Fund	74,551
Edmonton General (Grey Nuns) Hospital Fund	5,100
Ruthie & Hoadley Mitchell Memorial Fund	120,894
CENTRE FOR FAMILY LITERACY SOCIETY FUNDS	
Centre for Family Literacy Society of Alberta Fund	132,754
Family Literacy Society Fund	34,416
CITADEL THEATRE FUNDS	
Canada Cultural Investment Fund for the Citadel Theatre ¹	2,854,423
Citadel Theatre Fund	4,086,362
Maclab Theatre Permanent Endowment Fund	337,730
Arliss & Tevie Miller Citadel Fund	103,056
Dr. Susan & Ove Minsos Q.C. & Family Citadel Fund	58,941
Joseph H. Shoctor Fund	392,977
CKUA RADIO FOUNDATION FUNDS	
Bull Family CKUA Fund	11,102
CKUA Board of Directors Fund	15,331
CKUA Radio Foundation Fund	75,924
John & Barbara Poole Fund for CKUA Radio Foundation	585,980
EDMONTON AND AREA LAND TRUST FUNDS	
Boisvert Stewardship Endowment Fund	43,923
Edmonton and Area Land Trust Capital Fund	26,547
Edmonton and Area Land Trust Conservation Endowment Fund	138,050
Edmonton and Area Land Trust Operating Endowment Fund	3,524,911
Noni Lee Conservation Endowment	12,874
Ministik Stewardship Endowment Fund	74,374
Pipestone Creek Stewardship Endowment Fund	128,133
Prairie Crocus Fund	11,691
Russell Family Conservation Fund	14,854
Ross & Eleanor Wein Family Fund	15,180

Designated Funds (continued)	Year End Balance
EDMONTON ARTS COUNCIL FUNDS	
Edmonton Artists' Trust Fund	1,601,635
Lakhani Family Fund	22,501
Lee Fund for the Arts	1,441,605
John Mahon Fund	10,584
EDMONTON CITY CENTRE CHURCH CORPORATION FUNDS	
Anne Carmichael Children's Fund	12,515
William Daly Fund	68,224
Edmonton City Centre Church Corporation Fund	196,438
Annie Hole Children's Nutrition Fund	2,159,371
EDMONTON FOLK MUSIC FESTIVAL SOCIETY FUNDS	
Canada Cultural Investment Fund for the Edmonton Folk Music Festival Society ¹	906,925
Edmonton Folk Music Festival Society Fund	962,329
Don Snider Fund	346,444
EDMONTON INTERFAITH CENTRE FOR EDUCATION AND ACTION SOCIETY FUNDS	
Edmonton Interfaith Centre for Education and Action Society Fund	14,565
Lavinia Singh Fund for Peace	12,675
EDMONTON KIWANIS MUSIC FESTIVAL ASSOCIATION FUNDS	
Ranald & Vera Shean Fund	1,660,401
Ranald & Vera Shean Sonata Fund	28,113
EDMONTON OPERA FUNDS	
Sam and Sonia Azer Family Fund	11,369
Canada Cultural Investment Fund for the Edmonton Opera ¹	1,571,883
Dr. David Cook Fund for Edmonton Opera	19,049
Edmonton Opera Endowment Fund	231,665
Edmonton Opera Endowment Trust Fund	18,123
Edmonton Opera Fund (Poole)	986,707
Edmonton Opera Staff Contributions Fund	58,794
Frederic and Alma Gojmerac Family Fund	13,510
Irving Guttman Opera Endowment Fund	40,160
Robert Hood Fund	477,099
Dianne & Irving Kipnes Opera Fund	331,316
Oline and Roderick Markine Family Fund	13,070
Francis Price and Marguerite Trussler Family Fund	638,177
Dwight Purdy Memorial Fund	41,982

Designated Funds (continued)	Year End Balance
EDMONTON POLICE FOUNDATION FUNDS	
Edmonton Police Foundation Fund	66,388
Harry Hole Police Foundation Fund	713,416
EDMONTON PUBLIC LIBRARY FUNDS	
Edmonton Public Library Shelley Milner Fund	1,084,201
Stanley A. Milner Library Fund	146,710
EDMONTON SYMPHONY SOCIETY FUNDS	
Canada Cultural Investment Fund for the Edmonton Symphony Society ¹	935,668
Children's Programming Fund	125,786
Edmonton Symphony Endowment Fund	269,532
Edmonton Symphony Society Fund	1,093,714
Lila & Colin Eicher Symphony Fund	19,115
Peter & Astrid Griep Symphony Fund	18,808
Arliiss & Tevie Miller Symphony Fund	102,470
EDMONTON WOMEN'S SHELTER FUNDS	
Georgina Costuros Memorial WIN House Fund	155,511
Edmonton Women's Shelter Fund	521,971
FILM & VIDEO ARTS SOCIETY OF ALBERTA FUNDS	
Canada Cultural Investment Fund for the Film & Video Arts Society ¹	16,535
Film & Video Arts Society of Alberta Fund	23,714
FRINGE THEATRE ADVENTURES SOCIETY FUNDS	
Canada Cultural Investment Fund for the Fringe Theatre Adventures Society ¹	271,459
Cohos Evamy Endowment Fund	12,700
Fringe Theatre Adventures Society Fund	353,264
GIRL GUIDES OF CANADA-ALBERTA COUNCIL FUNDS	
Girl Guides of Canada-Alberta Council - Friends of Guiding Fund	14,232
Girl Guides of Canada-Alberta Council - William M. McGee Fund	17,281
HABITAT FOR HUMANITY FUNDS	
Alison B. Rice Bequest for Habitat for Humanity	3,046,842
Alison B. Rice Endowment for Habitat for Humanity	1,111,657
JUNIOR ACHIEVEMENT OF NORTHERN ALBERTA FUNDS	
Junior Achievement of Northern Alberta Fund	65,110
Junior Achievement Fund	30,579
Reagan Williams Achiever of the Year Scholarship Fund	30,556

Designated Funds (continued)	Year End Balance
LIEUTENANT GOVERNOR OF ALBERTA ARTS AWARD FUNDS	
Alberta Centennial Legacy Fund for the Lieutenant Governor of Alberta Arts Awards	617,949
Lieutenant Governor of Alberta Arts Award Fund	1,876,940
MAYERTHORPE AREA COMMUNITY FUNDS	
Blasko Family Arts Award Fund	18,677
Kathleen A. Davies Memorial Scholarship Fund	30,876
Marshall Hagman Memorial Award Fund	13,223
Jolene Hunt Memorial Award Fund	3,978
Olaf & Olga Mattson Memorial Award Fund	16,093
Peter Trynchy Award Fund	10,123
Rhiannon White Memorial Award Fund	15,706
Mayerthorpe Area Community Fund	63,376
MEMORIAL AND TRAFFIC SAFETY FUNDS	
Bob Boutilier Engineering Leadership Award Fund	10,954
Memorial and Traffic Safety Fund	19,899
Traffic Safety Scholarship Fund	23,195
NATIONAL THEATRE SCHOOL OF CANADA FUNDS	
Canada Cultural Investment Fund for the National Theatre School of Canada ¹	468,569
National Theatre School of Canada Fund	590,167
TEC-NTS Canada Cultural Investment Fund	154,308
TEC-NTS Fund	184,910
NORQUEST COLLEGE FUNDS	
John & Barbara Poole NorQuest Fund	363,782
Stollery NorQuest Student Fund	295,509
OPERA NUOVA FUNDS	
Opera NUOVA Emerging Artists Fund	45,286
Opera NUOVA Fund	29,724
OUR CHILDREN'S MILLENNIUM FUNDS	
Bicentennial Fund	123,349
Sarah & Martin Gouin Family Fund for Children	1,640,744
John Edward & Mary Ann Hockin & Family Fund	456,209
Darlene & Doug McNally Family Fund	22,227
Our Children's Millennium Fund	5,171,844

Designated Funds (continued)	Year End Balance
PILGRIM'S HOSPICE SOCIETY FUNDS	
Audrey Luft Fund	14,559
Pilgrim's Hospice Society Fund	32,478
RICHARD EATON SINGERS FUNDS	
Canada Cultural Investment Fund for Richard Eaton Singers ¹	60,465
Richard Eaton Singers Fund	123,661
ROOTS OF CHANGE FUNDS	
Father Michael Blanch Fund	15,503
FUNDACCO Fund for Higher Education	20,519
Father Denis Hebert Fund	74,004
John & Pauline Koroluk Memorial Fund	22,899
Eugene and Daria Malo Fund	10,866
Roots of Change Fund	33,497
Sacred Fund	19,148
SALVATION ARMY FUNDS	
Salvation Army Fund	373,728
Salvation Army Endowment Fund	94,584
ST. ALBERT COMMUNITY FUNDS	
Stanley Dennis Memorial Fund	33,057
Ron Hodgson Family Fund	26,528
Jamison Family Fund	165,590
Shelemey Client Memorial Trust Fund	17,154
St. Albert Community Fund	156,874
St. Albert Help Society Fund	64,418
St. Albert Library Future Fund	11,123
St. Albert Space Camp Fund	24,974
St. Albert Youth Community Centre Fund	11,404
Thatcher Neonatal Care Fund	376,440
TERRA CENTRE FUNDS	
Maureen Barnes & Joe Dolan Award Fund	14,448
Jac'y Hayter Achieving Dreams Together Fund	104,928
Toby Levy Fund	11,002
Sylvia Nasser Education Fund for Terra	32,259
Terra Future Builders Fund	66,263
Terra Nutrition Fund	139,381

Designated Funds (continued)	Year End Balance
TUXIS PARLIAMENTARY ALUMNI SOCIETY FUNDS	
Tim Beechey Memorial Fund	19,398
John Cunningham Fund	10,472
UNITED WAY OF THE ALBERTA CAPITAL REGION FUNDS	
Anonymous Fund #12	1,141,748
Anonymous Fund #13	1,141,618
Banister Family Fund	36,717
Lillian A. Simonet United Way Fund	624,869
United Way of the Alberta Capital Region Endowment Fund #1	106,883
United Way of the Alberta Capital Region Endowment Fund #2	510,486
United Way of the Alberta Capital Region Fund	1,381,111
Germaine & Walter Walchuk Fund	47,885
VICTORIA SCHOOL FOUNDATION FOR THE ARTS FUNDS	
Audrey & Greg Greenough Family Fund	15,639
Victoria School Foundation for the Arts Endowment Fund	2,096,452
THE WORKS ARTS FESTIVAL FUNDS	
Canada Cultural Investment Fund for the Works International Visual Arts Society ¹	93,344
The Works Arts Festival Fund	190,654
Y.W.C.A. FUNDS	
Roger & Peggy Gouin Fund	56,762
Y.W.C.A. Fund	87,029
YOUTH EMERGENCY SHELTER SOCIETY FUNDS	
Richard Latte Educational Fund	48,961
John Slatter Fund	144,947
YESS 2 Love Fund	19,484
YESS Directors' Fund	11,630
YESS Staff Contributions Fund	12,376
Youth Emergency Shelter Society Fund	547,271
Youth Emergency Shelter of Edmonton Fund	30,208
Total: Designated Funds	95,200,359

DONOR ADVISED FUNDS

Donors may choose to take an active role in selecting which charities to support each year and provide granting advice to the ECF Board. Donor advised funds offer the flexibility of a private foundation but with lower costs and less administrative work.

Donor Advised Funds	Year End Balance
Abstractive Consulting Community Fund	54,501
Allen Family Fund	4,349,584
Alzheimer Research & Support Fund	18,568
Larry & Janet Anderson Endowment Fund	1,326,510
Andrekson Family Fund	190,486
Anonymous	10,377
Anonymous	18,370
Anonymous	21,218
Anonymous	132,750
Anonymous	800,000
Anonymous	955,129
Anonymous Fund #10	10,857,841
Anonymous Fund #11	15,579,624
Anonymous Fund #14	5,452,080
Anonymous Fund #18	37,264,795
Anonymous Fund #19	33,005,436
Anonymous Fund #3	28,974,045
Anonymous Fund #7	23,081,018
Anonymous Fund #8	7,072,966
Anonymous Fund #9	20,170,722
Phyllis A. Arnold Capital Fund	53,596
B-rad Fund	50,361
Bacon Family Fund	65,207
Baher Family Fund	1,352,130
Robert A. & Maria Bailey Fund	2,108,725
Tommy Banks Performing Artists Fund	141,449
Sharon & Douglas Barbour Fund	42,235
Basken Family Fund	18,684
Baydala-Krawiec Endowment Fund	35,805
Alice & Alan Bell Fund	30,680
David & Janet Bentley Family Fund	1,297,563
Bruce & Carol Bentley Family Endowment Fund	50,083
Bruce & Carol Bentley Family Capital Fund	50,083

Donor Advised Funds (continued)	Year End Balance
Fred & Helen Bentley Education in Agriculture Awards Fund	82,803
Ian Bird Smart & Caring Community Fund	10,010
Barbara G. Blackley Fund	72,968
David Bodnarchuk Fund	27,690
John J. Boyd Family Fund	11,330
Ross Brierton & Daniel Stavert Fund	12,274
Ruth & Dudley Bristow Family Fund	274,379
Buchwald Family Fund	30,873
Burton Family Fund	60,680
Celestial Fund	10,015
Gil Charest Living Quilt Fund	34,510
Ross and Muriel Cheriton Fund	99,052
AGMJJ Cheung Family Fund	15,097
Margaret Rose Christensen Family Memorial Fund	187,359
Ernie Christman Family Fund	859,795
Cinders Fund	1,542,333
Clanging Cymbal Fund	1,264,700
Clanging Cymbal Capital Fund	4,600,623
Coutts/Jager Family Fund	33,729
Crescent Hill Fund	231,609
Robin Croteau Forever Young, Forever Smiling Award Fund	18,898
Jock Dawe Fund	224,907
De Bathe Family Fund	13,382
Herman & Elly de Jongh Fund	101,282
Ann & John Dea Family Fund	75,980
Shannon and John Dean Endowment Fund	18,891
Delbaere Husum Family Fund	50,125
Dentons Canada LLP, Edmonton Community Fund	25,280
Randy Diamond & Dree Thomson-Diamond Fund	40,292
'CR' & Del Dilkie Fund	55,333
Jennie Diment Fund	62,395
Peter & Christine Dirksen Family Fund	13,736
Duncan Craig Community Fund	40,451
Harold & Vivian Dundas Family Fund	87,134
Edmonton Chamber of Commerce Endowment Fund for Children in Need	602,879
Edmonton in Bloom Fund	16,619
Jim and Sheila Edwards Family Fund	87,318
Eidem Family Fund	1,045,288
Bev & Norm Ellingson Family Fund	128,667

Donor Advised Funds (continued)	Year End Balance
Faulkner Family Fund	121,632
Joelle Fawcett-Arsenault Fund	185,016
Fenna Family Fund	146,396
Lak & Ayoma Fernando Family Fund	26,739
Eldon & Anne Foote Fund	9,066,652
Tony & Daniela Franceschini Family Fund	1,504,620
Friends United for YEG Fund	27,310
David Fuga Memorial Fund	35,814
Future Project Fund	45,376
Gabriel's Fund (Owen Salava & Cheryl Walker)	13,319
Gallant Family Fund	12,739
Sheldon Jaima & Jacqueline Geller Fund	31,380
Carol Gilfillan Fund	64,978
Aletha Joy Bourne Gilsdorf READ2KIDS Memorial Fund	15,598
Steven & Patty Glover Family Fund	57,790
The Good News Fund	308,339
Karen Good Family Fund	33,404
Goonchen Fund	27,388
Carol A. Gouin Memorial Fund	71,473
Sarah & Martin Gouin Family Fund	2,797,070
Gower Family Fund	69,020
Grateful Palate Fund	15,787
Grieve/Jones Family Fund	134,084
Erin Noelle Guthrie Memorial Fund	140,406
Marshall Hamar Memorial Fund	49,322
Hankins Family Charitable Fund	13,601
Harper-Kennedy Fund	18,903
Hartnagel Family Fund	79,883
Rick & Connie Hendrickson Family Fund	62,159
Joyce A. Hendrickson Fund	23,082
Bettie Hewes Memorial Fund	37,577
Alice & Brian Hinds Fund	26,976
Gail & Bruce Hogle Family Fund	23,878
Jack & Audrey Holmes Fund	124,783
John & Leni Honsaker Fund	314,540
Fabian Bubel Hopkins Fund	20,570
Jane Hopkinson Fund	15,440
Kay & Steve Hrudey Memorial Fund	44,972
Hutton Family Fund	1,589,230
Jean & Garnet Ireland Fund	99,528

Donor Advised Funds (continued)	Year End Balance
Katherine Jacob Fund	26,664
Yvonne & Ron Jodoin Fund	50,898
Karen L. Johnson Fund	94,238
Jones Eidem Fund	118,377
Joy Family Fund	18,668
Jenny Jungkind Memorial Fund for Music and for Quality of Life	19,896
Karbani Family Fund	16,788
Dr. T.A. Kasper Family Fund	726,124
John & Linda Kimmitt Family Fund	25,384
Kirby Family Fund	17,311
Larry & Kathy Klaus Fund	38,741
Gerald Knoll Family Fund	363,921
Kohan Family Fund	286,791
Kool Family Fund	125,589
Dawson J. Koski Memorial Fund	34,460
Kouri Family Fund	30,549
Kozak-Van Brabant Fund	63,420
Felix & Pat Kuefler Fund	359,202
La Bruyère Fund	684,876
William & Shirley Lakey Family Fund	381,732
Lammerink Family Fund	241,771
Laurie/Thomson Fund	17,235
William Arnold ("Bill") Lee Fund	15,429
LeLacheur Family Fund	186,293
Leung Family Fund	13,549
Don & Mary Leverington Fund	13,485
Brian & Esther Link Fund	107,695
Liviniuk Family Fund	10,240
LMG Fund	226,666
Lost Coin Fund	25,823
Allan & Donna Lundell Family Fund	30,692
Shari & Pete MacKay Endowment Fund	308,339
Linda & Kim Mackenzie Family Fund	32,127
DKGB Mark Legacy Fund	25,032
Bill Marsden Motion Picture Practicum Fund	29,135
Darrel & Edith Martin Family Fund	373,822
McCarthy Family Fund	257,882
Kathryn L. & Richard A. McCarthy Fund	10,018
John & Eda McClung Fund	66,228
Hugh & Madge McColl Family Trust Fund	414,362

Donor Advised Funds (continued)	Year End Balance
McCuaig Desrochers Centennial Fund	171,337
McCullough ALES Capital Fund	100,357
Ron & Brenda McCullough Fund	14,783
McNary Fund	46,144
A. Blair McPherson Memorial Fund	17,664
Lawrence & Edith McRae Fund	888,471
Arlene Meldrum Community Action Fund	15,644
Kathryn & Robert Merrett Fund	65,579
John & Maggie KHG Mitchell Family Fund	1,013,443
Doreen & Zenith Moisey Fund	1,277,705
Montgomery Fund	15,762
Moses Charitable Fund	80,289
Music of the Spheres Legacy Fund	138,119
Nancy's Butterfly Fund	94,532
Eileen Nash Memorial Fund	63,710
NAVIFUND	192,134
Maggie & Jim Neilson Family Fund	26,934
Kimberly L. Nelson Fund	308,339
Michael Nelson Fund	308,339
Nichols Family Fund	15,861
No Room in the Inn Fund	43,473
Jim Noble Family Hope Fund	74,682
Nunastar Properties Fund for Northern Children	1,545,924
Odynski Family Fund	41,288
Ogilvie Fund	508,619
Fonds Vital & Colleen Ouellette Endowment Fund	18,128
Ralph & Aleda Patterson Family Fund	17,649
Judith Peglau Family Fund	68,279
Platten-Brimacombe Family Fund	24,707
Linda & Val Pohl Family Fund	18,017
David & Cheryl Porter Fund	15,894
Nancy Power Family Fund	13,218
V.N. & A.J. Pratt Fund	187,544
John & Connie Prentice Family Endowment Fund	679,378
Nora & Don Prentice Family Fund	14,120
Prestwich Fund	15,435
Allan R. Purvis Junior Hockey Memorial Fund	15,537
Rainbow Fund	126,801
Redshoe Family Fund	13,137
Geraldine Cecilia Riley Fund	18,148

Donor Advised Funds (continued)	Year End Balance
Ann & Steve Robson Family Fund	22,729
Arnold & Grace Rumbold Fund	325,175
Bud & Laverna Salloum Family Fund	107,892
David & Linda Salloum Family Fund	38,775
Savard Family Memorial Fund	611,163
Don & Georgie Scafe Fund	47,622
Schizophrenia Millennium 2000 Fund	16,804
Owen Schlosser Fund	139,057
David Schuster Family Fund	103,780
Semchishen Family Fund	73,017
Joseph & Kayla Shoctor Family Fund	320,231
Craig Simpson & Friends Charity Fund	50,645
Rod & Jane Simpson Family Fund	67,259
K.J. & M.C. Singleton Family Fund	58,166
Slavik Family Fund	598,930
Don & Joan Stanley Fund	2,270,438
Jean & Gerry Staring Fund	58,856
Pam & David Steeves Fund	14,055
A Family That Cares - John & Avery Stobbe Family Fund	29,775
Emmy Stuebing Family & Friends Fund	13,120
Tanzi Family Endowment Fund	14,291
Teri Taylor-Tunski (T3) Fund	506,204
"Teach a Man to Fish" Fund	22,371
Joe & Nancy Thompson Family Fund	2,601,607
Tiger Family Fund	13,934
Brian & Diane Travers Family Fund	42,423
Ron & Dorothy Triffo Family Fund	3,545,006
Bill & Laura Turnbull Fund	10,233
Denise & Hank Van Weelden Family Fund	25,089
van Woudenberg Family Fund	1,693,775
Vasa Skandia Award Fund	72,445
Victor-Osten Fund	1,216,080
Watson Family Fund	151,630
Weir Family Fund	903,981
Genevieve (Jean) Whiting Fund	97,710
Wilkes Family Fund	10,812
Douglas & Jane Wilson Fund	85,954
Justin J. Wong Memorial Fund	56,821
C.J. Woods, FCA Family Fund	337,916
C.J. Woods, FCA Family Capital Fund	1,510,158

Donor Advised Funds (continued)

	Year End Balance
Ron & Donna Worthington Family Fund	80,062
Yih Family Charitable Giving Fund	14,601
Ralph & Gay Young Family Fund	737,488
Ralph & Gay Young Family Capital Fund	805,681

FAMILIES OF DONOR ADVISED FUNDS

CABLE FAMILY COMMUNITY ENDOWMENT FUNDS

Cable Family SALCF Endowment Fund	325,693
Cable Family SKILLS Endowment Fund	189,010
Cable Family Community Endowment Fund	733,374
John J. & Helen G. Lachambre Memorial Endowment Fund	125,779

FLOW-THROUGH FUNDS

Larry & Janet Anderson Charity Fund	267,837
Edmonton Community Foundation Flowthrough Fund	696,161
John & Barbara Poole Flow-through Fund for the Arts	95,328
John & Barbara Poole Flow-through Fund for Community Services	200,000
John & Barbara Poole Flow-through Fund for Environment & Heritage	147,000
John & Barbara Poole Miscellaneous Flow-through Fund	585,000

Craig Simpson & Friends Flow-through Fund **34,100**

Stollery Small Grants Fund	61,697
Douglas Stollery Fund	47,200

ROTARY CLUB OF EDMONTON WEST FUNDS

Zen Moisey Rotary Club of West Edmonton Fund	16,286
Rotary Club of Edmonton West Fund	91,029

Total: Donor Advised Funds **261,643,906**

COMBINED FUNDS

Donors often have a number of different goals they wish to accomplish. For example, donors may wish to designate specific charities to receive portions of the disbursements from their fund year after year with the remainder to be used to address priority needs in our community as identified by the ECF Board.

Combined Funds

	Year End Balance
Randy Anderson Learning Fund	18,947
Anonymous Fund #4	50,117
Phyllis A. Arnold Learning Fund	696,637
Earl Clements Fund	20,974
H.J. (Jock) Dawe Family Fund	213,397
Edmonton Legal Community Fund	60,957
Audrey & Harold Eikeland Fund	83,162
Roy Faltinson Fund	124,140
Shirley & Gordon Gifford Family Fund	1,353,106
Earle & Elsie Hawkesworth Family Fund	160,476
W.A. & M. Hiller Fund	438,829
Owen & Peg Linton Family Fund	479,191
Mclvor Kent Endowment Fund	102,611
Tevie & Arliss Miller Endowment Fund	86,870
Osback Brown Fund	15,386
Doris Tanner Pimm Fund	229,553
Ruste Family Fund	16,043
Shell Albion Sands Environment Fund	97,107
Jim & Billie Wilkins Fund	134,967
Winspear Fund	14,346,327
John & Olivia Young Fund for Health	238,435
Total: Combined Funds	18,967,230



SOCIAL ENTERPRISE FUNDS

Impact investing is increasingly important provincially, nationally and internationally. ECF is a Canadian leader in this field. By investing in local social, cultural and environmental projects, these funds earn not only financial returns, but contribute to important community objectives at the same time.

Social Enterprise Funds	Year End Balance
Garber-Conrad Social Enterprise Endowment Fund	55,876
Social Enterprise Fund Operating Endowment Fund	1,478,469
Social Enterprise Capital Grant Fund	87,360
Bob Ward Social Enterprise Endowment Fund	27,892
Total: Social Enterprise Funds	1,649,596

Scholarship Funds (continued) Year End Balance

Harry Farmer Memorial Fund	15,193
Kathleen Farmer Memorial Fund	15,193
Mike Fogolin Spirit of Champions Scholarship Fund	62,812
John Patrick Gillese Fund	16,638
Bill & Ruth Grundy Student Award Fund	18,990
Hartwell Family Award Fund	22,698
Chris Hunter Memorial Fund	30,568
Chris Judge Endowment Fund	54,028
Wendy Keiver Endowment Fund	25,000
ManCap Legacy Education Grant Fund	636,429
Stephen and Lynn Mandel Graduate Scholarship in Sexual and Gender Minority Studies Fund	28,964
Manning Family Fund	14,151
McCaughey School "Invest in the Future" Scholarship Fund	29,923
Jean & Gregory Moisey Fund	25,194
Paul & Florence Mulyk Fund	14,539
John & George Nikel Music Award Fund	113,380
Evelyn & Gene Norville Memorial Scholarship Fund	93,758
John & Barbara Poole Arts to Education Scholarships Fund	280,291
John E. Poole Engineering Undergraduate Scholarships Fund	280,291
John E. Poole Scholarships Fund	1,345,404
Ernest E. Poole 1906 Stoughton Awards Endowment Fund	121,200
Douglas & Kathleen Ritchie Family Fund	35,514
Della Roland Memorial Fund	14,055
Saint John's School of Alberta Bursary Fund	20,999
Saint John's School of Ontario Bursary Fund	34,734
Father Sargeant Scholarship Fund	12,007
Shauna Seneca Award Fund	18,521
Stollery Education Trust Fund	310,492
Symphony Women's Educational Assistance Fund	56,847
F. Garth Worthington Memorial Scholarship Fund	15,783
Community Scholarship Flow-through Fund	60,180
All Weather Windows' Scholarship Fund	346,106
Former MLA Carl Benito Award Fund	54,557
Evelyn Mary Darch Memorial Fund	16,186
Edmonton Refugee & Emerging Community Awards Fund	40,201
ERHC Trade Scholarship Endowment Fund	519,622
Raymond G. Flanagan Scholarship Endowment Fund	129,385
Sarah & Martin Gouin Family Education Fund	1,272,208
Jeffrey Klaus Scholarship Fund	83,965

SCHOLARSHIP FUNDS

ECF offers a number of scholarship, bursary and award options to help students access a wide variety of post-secondary education and training opportunities.

Scholarship Funds	Year End Balance
Acadia House Scholarship Fund	13,389
Awinita Scholarship Fund	312,758
Diana Bacon Scholarship Fund	17,529
Albert Bodnarchuk Award Fund	13,252
Margaret-Ellen Bonar Scholarship Fund	13,139
Deb Cautley Award Fund	40,023
Thomas Chong Memorial Trust Fund	49,739
Clarence M. Christensen Occupational Health & Safety Scholarship Fund	50,204
Frantisek Cikane Memorial Fund	15,711
Judy Craig Professional Development Endowment Fund	29,824
Esther & Peter Cunliffe Fund	77,241
Samuel James Deans & Augusta Kreye Deans Award Fund	87,472
Delta Kappa Epsilon Award for Community Excellence Fund	43,841
Lindsay DeMone Scholarship Fund	18,761
Francis & Muriel Dunnigan Fund	13,303
Edmonton Chinese Lions Club Legacy Endowment Fund	23,983
Farmer Family Instrumental Organ Scholarship Fund	36,419
Farmer Family Kiwanis Fund	20,389

Scholarship Funds (continued) **Year End Balance**

Beverly MacLean Legacy Fund	95,541
Dr. John Melling Scholarship Fund	1,728,841
Leilani Muir Fund	65,509
Maria T. Schneider Fund	23,790
Ernesto B. Lejano Music Award Fund	2,939
Ross Sheppard Alumni Basketball Award Fund	6,411
Leif Welz Award for Multi-Sport Athletes Fund	2,841
Cheriton Student Award Fund	426,701
Nancy Fairley Scholarship Fund	310,239
Rose Margaret King Education Fund	711,629
Catherine Lalonde Memorial Scholarship Fund	77,055
Charmaine Letourneau Fund	77,360
Don & Norine Lowry Award for Women of Excellence Fund	382,274
Al Maurer Awards Fund	139,350
Peter Mehl Memorial Award Fund	19,808
Alexandra M. Munn Scholarship Fund	64,454
Dr. David Plotsky Memorial Fund	11,000
Ranald & Vera Shean Memorial Scholarship Fund	1,204,258
John & Andrea Wallin Fund	32,962
Dave Williams Leadership Award Fund	41,346

BELCOURT BROUSSEAU MÉTIS AWARDS FUNDS

Alberta Health Services Belcourt Brosseau Métis Award Fund	89,765
Belcourt Brosseau Métis Awards Fund	17,016,785
A.T. (Alphonse Thomas) Brosseau Family Fund	124,432
Chris & Pat Cowden Fund	11,656
Enbridge Pipelines Inc. Belcourt Brosseau Métis Awards Fund	109,224
Métis Elder Marge Friedel Award Fund	11,310
Rau Family Belcourt Brosseau Métis Award Fund	10,632
June Virginia Robinson Memorial Award Fund	23,964
Shell Canada Limited Belcourt Brosseau Métis Award Fund	108,537
Syncrude Canada Ltd. Belcourt Brosseau Métis Award Fund	37,044
Tervita Belcourt Brosseau Métis Award Fund	10,480

COMMUNITY SCHOLARSHIP FUNDS

Colin Forbes Memorial Fund	14,433
John & Barbara Poole Community Scholarship Fund	128,899
Stollery Community Scholarship Fund	137,473

Scholarship Funds (continued) **Year End Balance**

ROWSWELL FAMILY FUNDS

Gordon Giles Rowswell Fund	108,154
Terrance Rowswell-O'Connor Award Fund	135,688
Ronald Gordon Rowswell-O'Connor Fund	108,154
Gwendoline-Mary Standly-Rowswell Fund	108,154
Barbara Joanne Rowswell-Sykes Fund	108,154
Total: Student Award Funds	30,990,227

OPERATING FUNDS

ECF's goal is to maximize the amounts available to support the community. A prudent approach is taken to ensure that operating costs remain low and we appreciate the donors who contribute to our own operating fund.

Operating funds **Year End Balance**

Edmonton Community Foundation Operating Endowment Fund	2,816,284
Jack Watson Family Fund	12,787
Total: Operating Funds	2,829,071

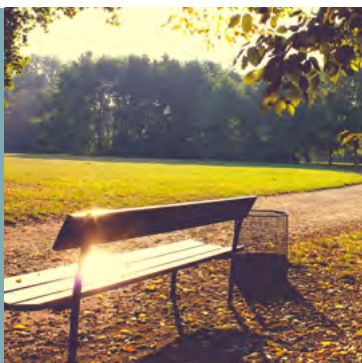


EMERGING FUNDS

Donors can gradually build named funds over a 10 year period. An initial gift is made with the commitment from the donor to add regularly to the fund until it reaches \$10,000, at which time disbursements can be made to charitable causes.

Emerging Funds	Year End Balance
26BG1234 Family Fund	6,958
Anonymous Fund #16	4,968
Babb/Murchison Family Fund	4,825
Berger Family Fund	3,430
Michael and Kathryn Brechtel Fund	6,081
Bull Family Fund	481
Canada Cultural Investment Fund for Mile Zero Dance Society	9,412
Cara's Friendship Fund	4,602
Chapple-Delaney Family Fund	4,850
Mary DeFerro Fund	346
EALT Agricultural Legacy Fund	8,982
Edmonton Shrine BBMA Award Fund	5,130
Diann & Art Etter Fund	3,907
Betty Fisher Fund	5,715
Charlotte and Tom Fredericks Fund for CKUA	1,413
Ross & Daralyn Hodgetts Family Fund	2,705
Holy Spirit Lutheran Church Fund	2,040
House Family Fund	5,554
Kathy Hutchinson Fund	4,005

Emerging Funds (continued)	Year End Balance
In Memory Fund	29,104
Keating Family Hedgehog Fund	1,072
KidSport Edmonton Fund	1,002
Violet Kully Legacy Fund	5,830
Mark D. Lepine Fund	3,831
Livia Stoyke Foundation EALT Fund	6,167
Scott & Cassandra Lundell Family Fund	1,842
Anne Mainland MacRae Award Fund	4,846
Ana Maria Melo Fund	5,345
Henry & Helen Neri Fund	5,018
North Saskatchewan River Valley Conservation Society Capital Fund	2,124
Papulkas Family Grace & Gratitude Fund	1,285
Joan Paton Fund	2,132
Pilgrims Hospice Fund	8,484
Terra Board Leadership Endowment Fund	1,182
TUXIS Legacy Fund	6,344
Walterdale Players' Endowment Fund	5,136
Sam Wong Fund	9,144
Noel D. Xavier Fund	1,205
Princess Taz Zowtuk Family Fund	4,550
Total: Emerging Funds	191,794



GIFTS PLANNED

for the future



Many donors have planned gifts that will create or add to endowment funds at a future date – gifts such as those made in wills or through life insurance or other estate planning tools.

Thank you to the following donors for indicating they have made such a future gift.

Anonymous
 Sharon Abbott
 Larry & Janet Anderson
 Paul & Carol Arnold-Schutta
 Patricia Babet
 Diana M. Bacon
 David Badowich & Seanna Collins Badowich
 Ken & Bernice Baher
 Bonnie Baldwin
 Geoff Ball & Amanda Newton
 Inger Bartram
 R.C. (Reg) Basken
 Vaughn & Tammy Beakhouse
 Cameron & John Bentz
 Gurvinder Bhatia & Aimee Hill
 Barbara Bowman
 Doris Boychuk
 Michael Bull & Family
 Nora Bumanis
 John & Ewa Burton
 Ross & Muriel Cheriton
 Sylvia & Jack Chetner
 John Choi

Richard C. Clayton
 R. Earl Clements
 Bert & Joyce Cook
 Richard S. Cook
 Wendy Cook
 John Corbett
 Jean & Barbara Crepin
 Carla Cumming Sojonky
 Peter Cunliffe
 Helen Davies
 Elly de Jongh
 F. Mae Deans
 Anne Marie Decore
 Terena Delaney & Sam Chapple
 Randy Diamond
 David Dickinson & Colette Mandin
 Dolores Dilkie
 Joe Dolan & Maureen Barnes
 Elaina Dorsey
 Dr. Frank & Freda Dorsey
 Leslie Dowler
 Edmonton Folk Music Festival Supporter
 Pat Eidem

Audrey Eikeland
 Leta Gene Eisert
 Diann Etter
 Terry & Vicki Fannon
 Pamela Farmer
 Malcolm & Avau Fast
 Keith Ferguson
 Jean Fitzsimmons
 Terry Fuga & Carol Watson
 Phyllis & Vincent Gallant
 Robert Gellatly
 Jaima, Sheldon & Jacqueline Geller
 Ken & Ruth Genge
 Karen Good
 Donna Gordon
 Martin Gouin & Sarah MacDonald
 L. Neil Gower
 Brian Haliburton
 Kevin & Rita Hanniman
 Lenore Hanson
 Francina Harvonen
 Kathryn Hawkesworth
 L. Dawn Hawley
 Brian & Jeanne Hetherington

Don Hight & Karen Iversen
 Jane Hopkinson
 Don Howden & Jane Squire Howden
 Douglas Hughes & Wanda Fawcett
 DeAnn Hunter
 Warren Hurt
 Clare & Tammy Irwin
 Mark Ulrich Jensen
 David & Karen Jeu
 Ronald & Yvonne Jodoin
 Sarah Johnston
 Lynne Jorgensen
 Leah Joys
 Scott & Lorraine Keast
 Dilip & Alaka Kembhavi
 Ann Kendall
 Kathleen (Kathy) King
 Pat Kirby
 Anne Kirkpatrick & Geoffrey King
 Larry & Kathy Klaus
 Miles Kohan & Annu Kaul-Kohan
 Eugene Kozak & Loretta Van Brabant
 Felix & Pat Kuefler
 Phillip Frank Lambert
 David & Joan Laurie
 Barbara Leah
 Bill Lee
 Morris & Doreen Lepine
 Elizabeth Lepp
 Dyann Lewis
 Debra Lieberman
 Dan & Laura-Lee Linehan
 Peg Linton
 Myron & Maureen Liviniuk
 Allan & Donna Lundell
 Jim MacLean
 Brenda L. Martin

Darrel & Edith Martin
 William, Mufty, Kyle & Kory Mathewson
 Eda McClung
 John McIvor & Doris Kent
 Letha McKee
 Janet McLean
 Carman & Averie McNary
 John McPherson
 Kathryn & Robert Merrett
 Paul & Stephanie Morton
 Ron & Lynn Odynski
 Al & Fran Olson
 Penny & Ron Omell
 Esther Ondrack
 Dianne Osback
 Vital & Colleen Ouellette
 Lucy & Larry Pana
 Joan Paton
 Darwin G. Pearson
 Louise Perkins
 Doris Tanner Pimm
 Karen Platten
 Gary & Linda Poignant
 Dennis & Tanya M. Pon
 David & Cheryl Porter
 Dan Post
 Nancy Power
 Monica Prelusky & Don Onischak
 Gordon Prest
 Florence Sylvia Plishka
 Josh Ramsbottom & Shannon Zwicker
 Deborah Reinhart
 Philip & Heather Renaud
 L.J. (Larry) Ricard
 Archie & Elaine Roberts
 Era Rowles
 Marshall & Lisa Sadd
 Owen Salava
 & Cheryl Walker

David & Linda Salloum
 Donna Savard
 Don & Georgie Scafe
 Maria T. Schneider
 Wally & Rosanna Sczebel
 Albin J.E. Shanley
 Hal Simonson
 Kenneth & Margaret Singleton
 Jerome Slavik
 Lois Sorgen
 Peter Sorrell
 Colin Soskolne
 Hugh & Anne-Marie Stacey
 E. Fay Stankov
 Alex Stephens
 David Earl Stewart
 Craig & Mark Stumpf-Allen
 Thomas Summers
 Dree Thomson-Diamond
 Olive Thorne
 Darryl Trueman
 Bill & Laura Turnbull
 Constance Unsworth & Marshall Palichuk
 L. Elaine Wagner
 Joseph & Wadona Walsh
 Jack & Marjorie Watson
 Marguerite Webb
 Eileen Werner
 Jack & Marion Whitworth
 Peter & Anne Wightman
 Gordon & Audrey Wilkes
 Ian & Betty Jean Willing
 Douglas & Jane Wilson
 Sam Wong
 C. J. Woods, FCA
 Noel Xavier
 Don & Leona Yez
 Linda M. Youell
 Olivia Young

FINANCIAL *highlights*

Year ended
December 31, 2014

The complete,
audited financial
statements are
available at
ecfoundation.org.

- Total value of funds amounted to \$455.6 million (2013: \$404.8 million)
- Total distributions for charitable causes were \$16.8 million (2013: \$12.3 million)
- Annualized return of 8.27% since 1989 (gross of fees)
- \$19.4 million received in contributions (2013: \$73.4 million)
- Return on investments 11.37% (2013: 15.66%) net of average custodian and investment management fees
- Net administration costs were 0.63% of the average market value of all funds (2013: 0.66%) excluding custodian and investment counsel fees
- 83 new funds created

Financial Highlights (continued)

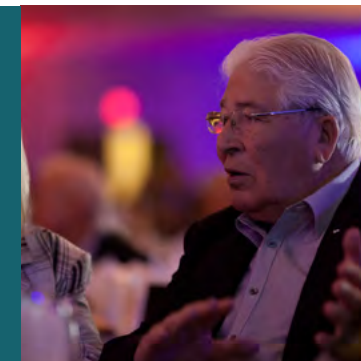
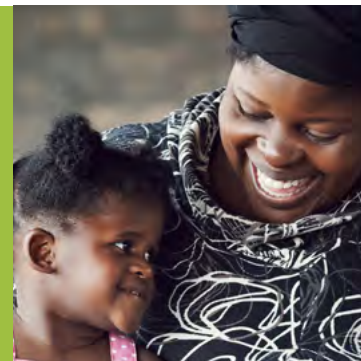
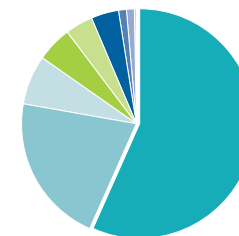
Year ended December 31, 2014

Funds

The total value of the funds was \$455.6 million at year-end (2013: \$404.8 million).

(Thousands of dollars)	2014		2013	
Donor Advised Funds	\$ 261,836	57%	\$ 230,706	56%
Designated Funds	95,200	21%	83,831	20%
Student Award Funds	30,990	7%	23,077	6%
Community Funds	24,711	5%	27,347	7%
Combined Purpose Funds	18,967	4%	17,200	4%
Field of Interest Funds	16,565	4%	14,774	4%
Operating Funds	3,628	1%	3,203	1%
Restricted Fund	2,051	1%	2,051	1%
Social Enterprise Funds	1,650	<1%	2,565	1%
	\$ 455,598	100%	\$ 404,754	100%

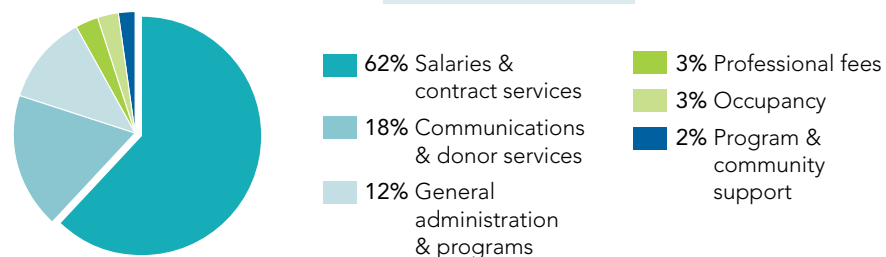
- 57% Donor Advised Funds
- 21% Designated Funds
- 7% Student Award Funds
- 5% Community Funds
- 4% Combined Purpose Funds
- 4% Field of Interest Funds
- 1% Operating Funds
- 1% Restricted Fund
- <1% Social Enterprise Funds



Operating Expenses

Net operating expenses were kept to 0.63% of the average market value of all funds.

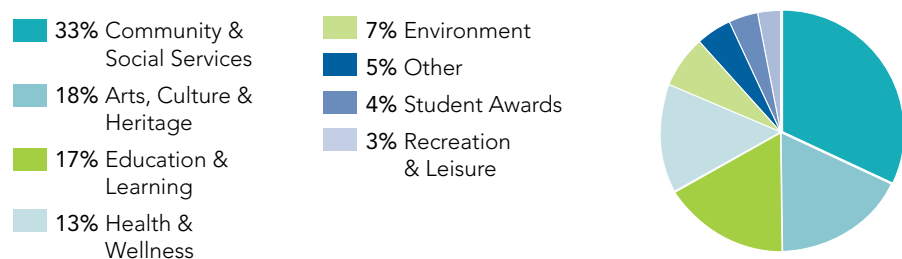
(Thousands of dollars)	2014		2013	
Salaries & contract services	\$ 2,158	62%	\$ 1,898	62%
Communications & donor services	625	18%	378	13%
General administration & programs	420	12%	443	14%
Professional fees	113	3%	141	3%
Occupancy	111	3%	82	3%
Program & community support	72	2%	76	5%
Contributions & Recoveries	(606)		(508)	
	\$ 2,893	100%	\$ 2,510	100%



Disbursements for Charitable Purposes

Distribution for charitable causes were \$16.8 million (excluding \$0.8 million from funds administered for other charities).

(Thousands of dollars)	2014		2013	
Community & Social Services	\$ 5,482	33%	\$ 3,849	32%
Arts, Culture & Heritage	2,981	18%	2,246	19%
Education & Learning	2,880	17%	1,402	11%
Health & Wellness	2,187	13%	1,731	14%
Environment	1,216	7%	1,149	9%
Other	913	5%	666	5%
Student Awards	616	4%	614	5%
Recreation & Leisure	484	3%	640	5%
	\$ 16,759	100%	\$ 12,297	100%



ECF Board Members

Carman McNary,
Chair

Ted Kouri,
Vice Chair

David R. McCalla,
Secretary

Joanne Berger

Gurvinder Bhatia

Chandra Clarke

Terena Delaney

John C. Mah

Anne McLellan

Liz O'Neill

Nancy Reynolds

Gary Smith

Garth Warner

Investment Committee

Randy Biberdorf

Robert Cole

Arthur Madden

Kevin McDowell

Carman McNary

Orest A. Pyshniak

David Salloum

Gary Smith, *Chair*

Main Fund Custodian

CIBC Mellon Global Securities Services Company

Investment Counsellors

Aberdeen Asset Management Inc.

Bentall Kennedy (Canada) LP

Canadian Urban Limited

CIBC Asset Management Inc.

Connor, Clark & Lunn Investment Management Ltd.

GE Asset Management Incorporated

Global Infrastructure Partners

Mawer Investment Management Ltd.

Northleaf Capital Partners.

Phillips, Hager & North Investment Management | RBC Global Asset Management Inc.

Standard Life Investments

State Street Global Advisors

Pavilion Investment House

ECF Staff List

Martin Garber-Conrad,
Chief Executive Officer

Jane Frances Asaba,
Donor Services Assistant – Receipting

Barry Bailey,
Communications Advisor

Anita Bauman,
Finance Associate

Elizabeth Bonkink,
Communications Advisor

Gladys Bugayong,
Finance Accountant

Kerri DeLuca,
Stewardship Associate

Alex Draper,
Donor Grants Associate

Ashley Dryburgh,
Grants Administrator

Kathy Hawkesworth,
Director, Donor Services

Liz Lepp,
Estates, Legal Assistant

Cassandra Lundell,
Community Grants Associate

Florence Okeola,
Operations Accountant

Anna Opryshko,
Student Awards Associate

Andrew Paul,
Communications Advisor

Chris Quinn,
Director, Finance & Operations

Randy Round,
Investment Analyst

Monica Smith,
Executive Assistant to Martin Garber-Conrad Chief Executive Officer

Craig Stumpf-Allen,
Director, Grants & Community Engagement

Denise Veinot,
Receptionist/Administrative Assistant

Carol Watson,
Director, Communications

Adrienne Wong,
Project Assistant & Communications Liaison

Noel Xavier,
Donor Advisor

Social Enterprise Fund

Jane Bisbee,
Executive Director

Gail M. Yakemchuk,
Administrative Associate

Thank you to the following organizations.

Aberdeen



Bentall
Kennedy



Canadian Urban Limited

CIBC MELLON

Finance par le
gouvernement
du Canada

Funded by the
Government
of Canada

Canada



GE Asset Management

Northleaf
Capital Partners

STATE STREET
GLOBAL ADVISORS

PHILLIPS, HAGER & NORTH
Investment Management®



MIX
Paper from
responsible sources
FSC® C009446



Edmonton Community Foundation

9910 - 103 Street NW,
Edmonton AB, T5K 2V7
Phone 780.426.0015
Email info@ecfoundation.org
www.ecfoundation.org