

# Vital Signs®

EDMONTON  
COMMUNITY  
FOUNDATION



## WHAT IS VITAL SIGNS?

**Edmonton Vital Signs** is an annual check-up conducted by Edmonton Community Foundation, in partnership with Edmonton Social Planning Council, to measure how the community is doing. This year we will also be focusing on individual issues, **Vital Topics**, that are timely and important to Edmonton - specifically Women, Sexual Orientation and Gender Identity in Edmonton, Visible Minority Women, and Senior Women. Each of these topics appear in an issue of Legacy in Action throughout 2018, and are also presented here – the full issue of Vital Signs.

Community foundations across Canada and internationally are also reporting on how their communities are doing, and how Canada is doing overall.



*Unless otherwise stated, "Edmonton" refers to Census Metropolitan Area and not solely the City of Edmonton.*

## WHO ARE WE?

**Edmonton Community Foundation (ECF)** is the fourth-largest community foundation in Canada. ECF helps stimulate change and community growth by supporting donors and granting in the following areas: community and social services; arts, culture and heritage; health and wellness; education and learning; environment; recreation and leisure; and social enterprise.

**Edmonton Social Planning Council (ESPC)** is an independent, non-profit, non-partisan, social research organization. Established in 1940, ESPC conducts research and analysis into a wide range of topics, particularly in the areas of low income and poverty. The council's publications and reports provide the public and government with current and accurate information to support informed decision-making.

## ADVISORY COMMITTEE

**ERICK AMBTMAN**  
Edmonton Mennonite Centre  
for Newcomers

**CHELSEA ANSWEW**  
City of Edmonton

**ELIZABETH BONKINK**  
Edmonton Community  
Foundation

**ASHLEY DRYBURGH**  
Edmonton Community  
Foundation

**ROSALIE GELDERMAN**  
Edmonton Seniors  
Coordinating Council

**ANDRE GRACE**  
University of Alberta

**YASMIN HUSSEIN**  
Edmonton Social Planning  
Council

**MARY JANE JAMES**  
Sexual Assault Centre of  
Edmonton

**JOHN KOLKMAN**  
Edmonton Social Planning  
Council

**KAREN MCDONALD**  
SAGE

**AMRITA MISHRA**  
The Indo-Canadian Women's  
Association

**SUSAN MORRISSEY**  
Edmonton Social Planning  
Council

**AMBER NEIMEIER**  
YWCA

**SANDRA NGO**  
Edmonton Social Planning  
Council

**MARNI PANAS**  
Member at Large

**MICHAEL PHAIR**  
U of A, Member at Large

**KATE QUINN**  
CEASE

**BUKOLA SALAMI**  
Member at Large

**NICOLE SMITH**  
Greater Edmonton Foundation

**CAROL WATSON**  
Edmonton Community  
Foundation

**EDMONTON COMMUNITY FOUNDATION**  
9910 103 Street NW, Edmonton, AB T5K 2V7  
[ecfoundation.org](http://ecfoundation.org)

**EDMONTON SOCIAL PLANNING COUNCIL**  
#200, 10544 - 106 Street, Edmonton, AB T5H 2X6  
[edmontonsocialplanning.ca](http://edmontonsocialplanning.ca)

Sources for these statistics are available at [ecfoundation.org](http://ecfoundation.org)



# WOMEN IN EDMONTON

## POPULATION

BY GENDER IN THE CITY OF EDMONTON:

466,655 WOMEN 465,890 MEN

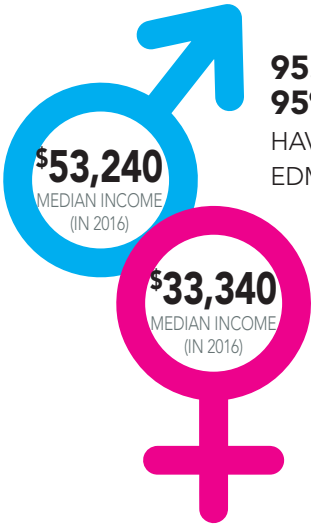
## PAY GAP

IN YEARLY EARNINGS, WOMEN WORKING FULL-TIME IN CANADA STILL EARNED **74.2¢** FOR EVERY DOLLAR THAT FULL-TIME MALE WORKERS MADE.



IN EDMONTON, WHERE **HIGHER PAYING JOBS** ARE IN THE ENERGY SECTOR, ENCOURAGING WOMEN TO STUDY TRADES WILL HELP THEM ACCESS THESE **BETTER WAGES**.

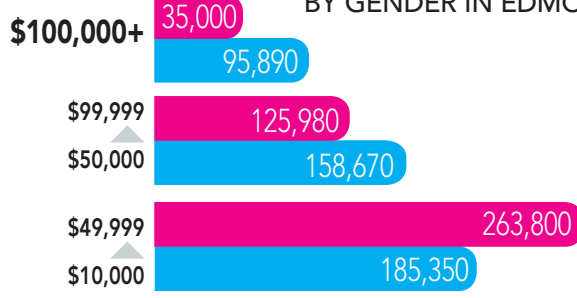
## INCOME EQUITY



**95.1%** OF MEN AND **95%** OF WOMEN HAVE INCOME IN EDMONTON.

## INCOME LEVEL

BY GENDER IN EDMONTON



## EDUCATION

SLIGHTLY MORE WOMEN (**215,500**) THAN MEN (**212,860**) HOLD A **POST-SECONDARY CERTIFICATE, DIPLOMA OR DEGREE** IN EDMONTON:

50,900	77,590	109,455	29,980	6,005
13,545	52,270	95,280	27,995	3,430
APPRENTICESHIP OR TRADE CERTIFICATE	COLLEGE, CEGEP OR OTHER NON-UNIVERSITY CERTIFICATE OR DIPLOMA	UNIVERSITY DIPLOMA, CERTIFICATE OR BACHELOR'S DEGREE	BACHELOR'S DEGREE IN VETERINARY MEDICINE, DENTISTRY OR OPTOMETRY OR MASTER'S DEGREE	EARNED DOCTORATE

## LEADERSHIP

According to the 2017 Scorecard on Edmonton Women's Quality of Life, the percentage of women in leadership in Edmonton for 2011:

- 30%** FRONT-LINE LEADERSHIP
- 37%** MANAGEMENT LEADERSHIP
- 29%** SENIOR MANAGEMENT

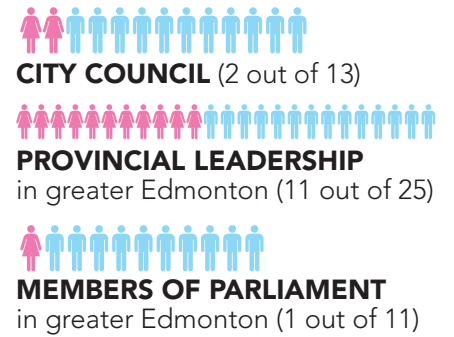
### WOMEN'S ADVOCACY VOICE OF EDMONTON (WAVE)

established in 2014, provides Edmonton City Council with advice to ensure women's rights, issues, and opinions are represented fairly and equally from every background including social, cultural, physical and occupational.

IN A RECENT LEGER POLL:

**38.6%** of Edmontonians feel that women "often face discrimination."

### FEMALE POLITICAL LEADERSHIP IN EDMONTON (2018)



### ECF VITAL Work

**EMPOWER U** (made up of 10 partner agencies serving women) received \$75,000 per year for three years to assist low income women improve their financial literacy.

It includes a matched savings component where savings can be used to purchase assets related to building wealth and improving quality of life, education, or job training.

## PERSONAL SECURITY FOR WOMEN

EPS Says...

### 13% spike in sexual assaults in Edmonton over 2016.

In the first seven months of 2017, around 540 victims reported being sexually assaulted to police in Edmonton, 63 more compared to this time in 2016.

In 2014, police chief Rod Knecht reported, "I can tell you we have six or seven serious sexual assaults in the city every weekend, so every Friday and Saturday night."

### ECF VITAL Work

**YWCA** will receive \$75,000 for three years to support YWCA Edmonton's Counselling Centre to address growing demand. It will increase the number of sessions delivered each year and reduce wait times.

YWCA Edmonton has been offering counselling services since 1972, with programs that evolve to meet the needs of the community.

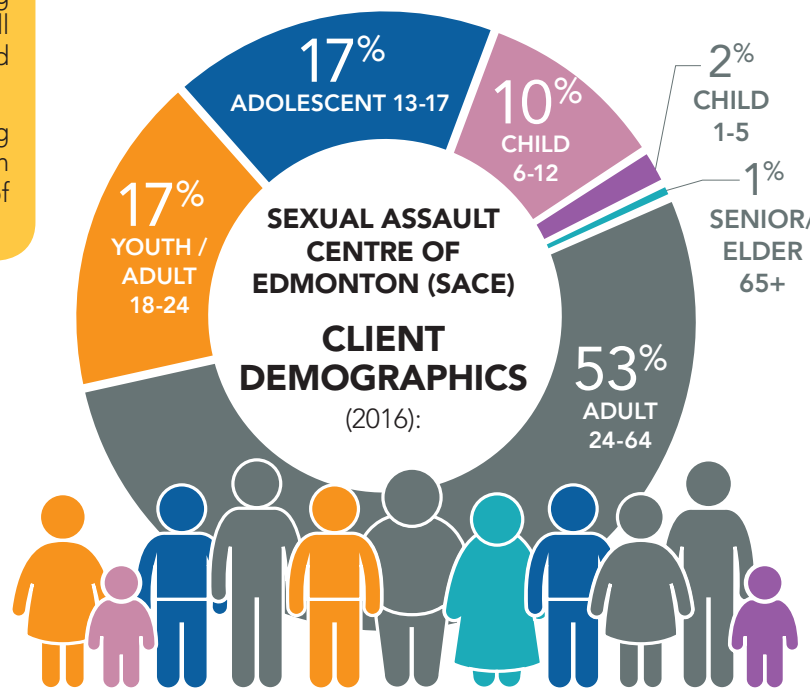
## DOMESTIC VIOLENCE

According to a report on domestic violence in Edmonton over a four-year period (2010-2014).

### VICTIMS OF DOMESTIC VIOLENCE ARE MORE LIKELY TO BE:

- FEMALE
- 20 TO 34 YEARS OF AGE (AVERAGE AGE 33.2)
- VICTIMIZED BY AN INTIMATE PARTNER
- A MOTHER
- LIVING WITH (OR MARRIED TO) THEIR PARTNER.

## SEXUAL ASSAULT



### ECF VITAL Work

**Sexual Assault Centre of Edmonton (SACE)** received \$55,035 to update their marketing materials and communications, expand crisis services, and raise awareness to build a shared vision of ending sexual violence in the community. SACE exists to empower individuals affected by sexual abuse and assault and empower communities to take action against sexual violence.

### SEXUAL ASSAULT RATE IN EDMONTON (2016)

The sexual assault rate per 100,000:

**72**

EDMONTON

**58**

CANADA OVERALL

Only Winnipeg had a higher rate among the major cities.

### SACE CLIENT FACTS (2016):

- 86%** FEMALE **14%** MALE
- 1%** TRANSGENDER
- 83%** OF WOMEN WITH DISABILITIES EXPERIENCE SEXUAL ASSAULT IN THEIR LIFETIME.
- 57%** OF ABORIGINAL WOMEN EXPERIENCE SEXUAL ASSAULT IN THEIR LIFETIME.
- SEXUAL ASSAULT ACCOUNTS FOR **11%** OF VICTIMIZATION AGAINST THE ELDERLY.

## 3 THINGS YOU CAN DO:

### LISTEN.

Allow women to speak without interruption. Research shows that women are interrupted far more than men. It is only courteous to listen to each other. The other part of listening is hearing – so when a woman says she has been harassed, hear that she feels victimized.

### SPEAK UP.

It's just a joke, right? No harm was meant. It feels different on the receiving end. Speak up for your fellow human and make it a less caustic atmosphere. This is especially true on social media where it is easy to say harmful things anonymously.

### ADVOCATE.

Publicly support universal policies that do not discriminate, either in purpose or effect, based on race, gender, sexual orientation, class, etc. And, identify situations where people are being treated unequally and speak up for equal treatment. It is the right thing to do.



# SOGI EDMONTONIANS

## LIMITATIONS IN RESEARCH:

It is important to note that statistics and data are mostly compiled in binary categories (male or female). Similarly, often it is assumed that there are gay or straight couples only.



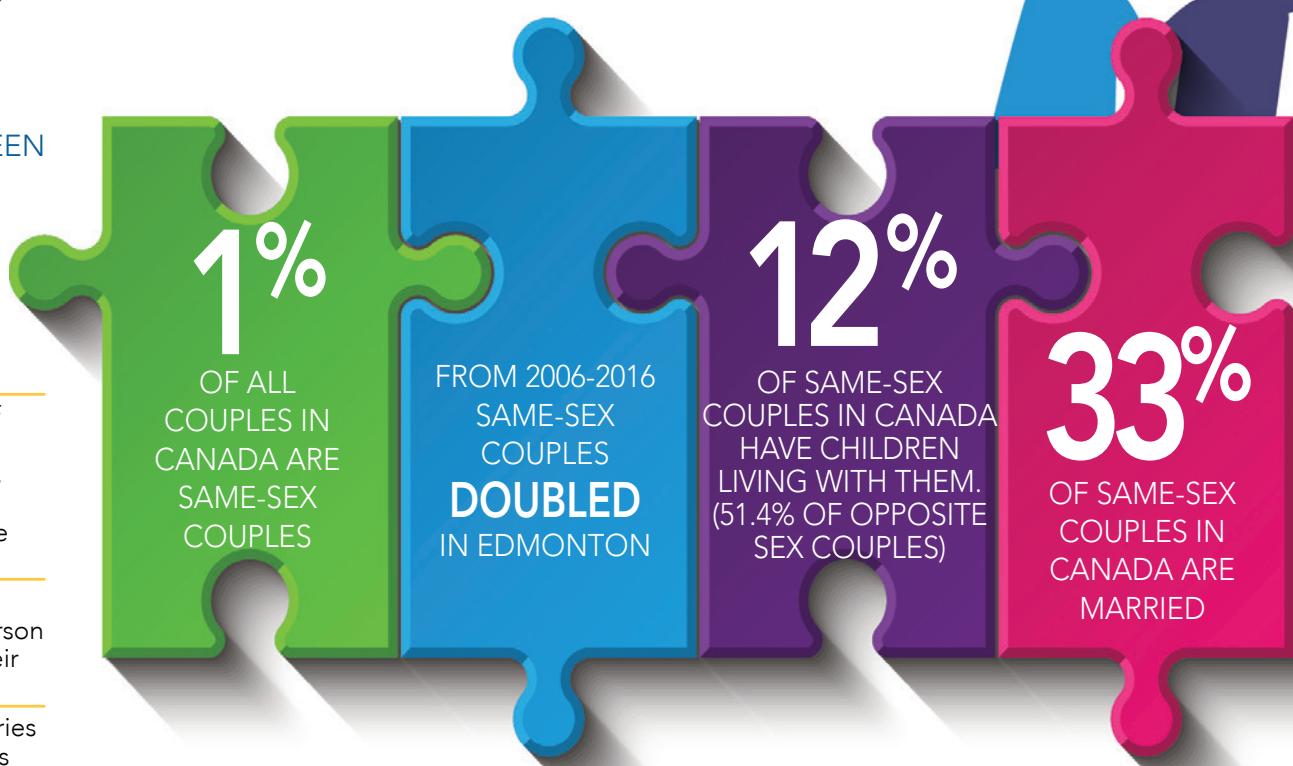
## WHAT IS THE DIFFERENCE BETWEEN SEX AND GENDER?

**GENDER** - Social and cultural expectations of roles and presentation. For most people their gender matches the sex they were assigned at birth; others identify as being transgender or gender diverse.

**GENDER EXPRESSION** - Presentation of a person's gender expressed through an individual's name, pronouns, appearance, behaviour, or body characteristics. What society identifies as masculine or feminine changes over time and varies by culture.

**GENDER IDENTITY** - A person's deep-seated, felt sense of gender, or how a person feels on the inside, regardless of what their body looks like.

**SEX (Sex at birth)** - Refers to the categories people are typically assigned at birth. This often appears on identity documents.



## WHAT'S IN A NAME?

**LGBTQ+** has commonly been used to represent the community of people who identify as Lesbian, Gay, Bisexual, Transgender, Queer, Questioning, Gender Queer, Asexual, Transsexual, Androgynous, Intersex, Two-Spirit, Pansexual or other identities.



Since the goal is to be inclusive, and by using a list we may inadvertently exclude someone, we are using the term Sexual Orientation and Gender Identity/Expression (SOGI).

## DEFINITIONS

Throughout this report you may see a mix of terms (LGBT, LGBTQ2, etc...) depending on who was included in the research. We hope the definitions below will help define who is included in the stat.

**LESBIAN** - A woman (or girl) who has an emotional or sexual attraction to other women.

**GAY** - A person who is attracted to people of the same sex or gender. This term is most often used for a man (or boy) who is attracted to other men.

**BISEXUAL** - A person who has an emotional or sexual attraction to men and women.

**TRANSGENDER** - An umbrella term for people whose gender identity and/or gender expression differs from what is typically associated with the sex they were assigned at birth. Some people may describe themselves using one or more of a wide variety of terms.

**QUEER** - A reclaimed term used by some people who identify as sexual and/or gender diverse and also used as a positive, inclusive term to describe communities and social movements.

**CISGENDER/CIS** - A person whose gender matches the sex they were assigned at birth.

**ALLY** - A person who advocates for the human rights of sexual and gender diverse people by challenging discrimination and heterosexism.

**BINARY** - The idea that gender is strictly an either/or option - male or female. Non-binary refers to gender identities that are not exclusively male or female.

## ACCEPTANCE & BELONGING

### ALBERTA TRANS YOUTH SURVEY

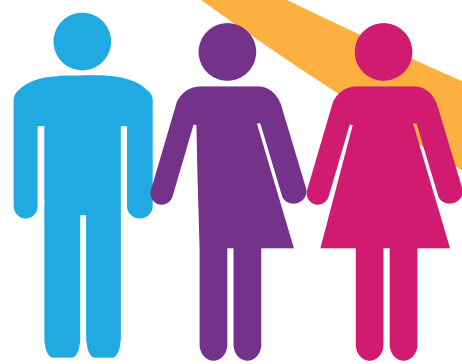
represents the experiences of 114 younger (14-18 years) and older (19-25 years) trans youth living in Alberta.

#### KEY FINDINGS:

- Safety, violence, and discrimination are major issues. 75% of youth under 18 report discrimination because of their gender
- 80%+ of trans youth (14-18) reported their family did not understand them
- Almost 70% of trans youth reported experiences of sexual harassment

### ECF VITAL Work

**UNIVERSITY OF ALBERTA** received \$7,700 for the Gender Program in 2018, for equipment to facilitate new group therapy sessions at the Gender Program (a multidisciplinary health program for transgender and gender diverse people).



## HEALTH & WELLBEING

AMONG ALL YOUNG CANADIAN ADULTS, YOUNG LGBTQ ADULTS WHO EXPERIENCE HIGH LEVELS OF REJECTION WERE

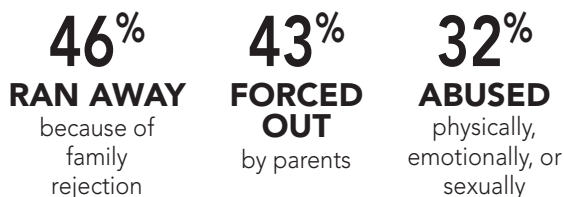


TRANSGENDER INDIVIDUALS REPORT DIFFICULTY ACCESSING PRIMARY AND SPECIALIST CARE.

## HOUSING & HOMELESSNESS

**8%** OF RESPONDENTS IDENTIFIED AS **LESBIAN, GAY, BISEXUAL, QUEER, OR TWO-SPIRIT** IN THE 2016 EDMONTON HOMELESS COUNT

Top reasons why LGBT youth are at risk/or homeless (multiple responses allowed):



### ACCORDING TO A RECENT LEGER POLL:

**47.3%** of Edmontonians feel that, "The LGBTQ community in Edmonton often faces discrimination."

### SENIORS

Current research estimates that up to seven per cent of the senior population is openly LGBTQ.

#### EDMONTON LGBTQ SENIORS HOUSING REPORT

According to a needs assessment, compared to their heterosexual counterparts:

- LGBTQ2 older adults are often more likely to have a difficult time securing housing.
- Older adults are reluctant to be open about sexual orientation or gender identity due to lifetime experiences with discrimination.

### TWO-SPIRIT

An English-language 'term' to reflect and restore Indigenous traditions forcefully suppressed by colonization, honouring the fluid and diverse nature of gender and attraction and its connection to community and spirituality. It is used by some Indigenous people rather than, or in addition to, identifying as LGBTQ. Two-spirit individuals are held in high honour in their communities.

### NEWCOMERS & REFUGEES

Edmonton Mennonite Centre for Newcomers and the Pride Centre have partnered to support LGBTQ+ Newcomers in Edmonton. 43 individuals have accessed services between Sept 2017 and Mar 2018.

## BE AN ALLY – Words matter.

When talking with and about sexual and gender minority people, use inclusive language and avoid reinforcing stereotypes and assumptions of the gender of people who perform various roles.

For example: "spouse" instead of husband or wife. Ask a person's pronouns and state yours, creating a safe space for others.

**Be an advocate.** Create a space for all voices to be heard. Take action against discrimination or hate in your community.

**Educate yourself.** Learn the terms, definitions and language used. Never make assumptions. If you don't know, ask. Check your privilege and do not assume to know the sexual orientation or gender identity of another person.

# VISIBLE MINORITY

In 2016, approximately 348,895 people reported belonging to a visible minority group in Edmonton. Just over half were women and girls.

**THE HIGHEST PROPORTION OF VISIBLE MINORITIES INCLUDE SOUTH ASIAN AT 86,550 INDIVIDUALS, CHINESE AT 57,715 INDIVIDUALS AND BLACK AT 54,285 INDIVIDUALS.**

## DEFINITIONS

**VISIBLE MINORITY:** Refers to persons, other than Aboriginal peoples, who are non-Caucasian in race or non-white in colour.

**RACIALIZED:** Racialized gender refers to the effects of race and gender processes on individuals, families, and communities. This concept recognizes that women do not experience race and gender similarly.

**AUDIBLE MINORITY:** An individual whose accent is different from the mainstream community. It usually is used to refer to accent discrimination, and is part of a multi-faceted and interconnected web of prejudice that includes race, gender, sexuality, and many other notions of identity, whether chosen or imposed.

ALMOST **4 IN 10** EDMONTONIANS ARE A VISIBLE MINORITY



DESPITE VISIBLE MINORITY WOMEN BEING MORE LIKELY TO HAVE POST-SECONDARY EDUCATION, THEY ARE MORE LIKELY TO BE EMPLOYED IN LOWER-INCOME JOBS.



## EDUCATION

Visible minority women (born in Canada) are more likely to have a post-secondary degree, AND (whether born in Canada or not) are more likely to be in a non-traditional field.

### MAJOR FIELD OF STUDY

	NOT A VISIBLE MINORITY WOMEN	VISIBLE MINORITY WOMEN
Physical and life sciences and technologies	2.9%	5.7%
Mathematics, computer and information sciences	2.5%	4.8%
Architecture, engineering, and related technologies	3.0%	5.5%

**47.7%** of Canadian-born visible minority women of core working age had a university degree.

**25.8%** of same-aged women who were not a visible minority had a university degree.

## WOMEN IN EDMONTON

### did you know?

According to Statistics Canada, generation status indicates how many generations a person and their family have been in Canada.

- **FIRST GENERATION:** Persons born outside Canada.
- **SECOND GENERATION:** Persons born in Canada with at least one parent born outside Canada.
- **THIRD GENERATION OR MORE:** Persons born in Canada with both parents born in Canada

## EMPLOYMENT

### WAGE GAP

Visible minority women earn **70.1%** of what all men earn, and 84.4% of what visible minority men earn.

### DISCRIMINATION

Over 20% of visible minority women in Canada experienced some discrimination due to: ethnicity, race, skin colour, religion, or language. Half of those reported discrimination in their workplace or when applying for a job.

### TOP 3 INDUSTRIES OF EMPLOYMENT FOR IMMIGRANT WOMEN IN EDMONTON



**25.4%**  
HEALTH CARE AND SOCIAL ASSISTANCE



**14.6%**  
RETAIL TRADE



**11.7%**  
ACCOMMODATION AND FOOD SERVICES

There is a higher prevalence of low income among visible minority women compared with women who are not a visible minority.

## VISIBLE MINORITY WOMEN IN LEADERSHIP

Across Canada, only 7% of municipal council seats are held by visible minorities, according to a study of the 50 largest cities.



IN THE 2017 MUNICIPAL ELECTION, 7 CANDIDATES WERE VISIBLE MINORITY WOMEN.

Despite more visible minority women running in each election, there are no visible minority women on Edmonton City Council.

### PERCENTAGE OF WOMEN CANDIDATES WHO WERE VISIBLE MINORITY THAT RAN IN EACH ELECTION

6.7%  
2010

12%  
2013

39%  
2017

### IN A RECENT LEGER POLL:

**54.7%** of Edmontonians feel that racism is a problem in Edmonton and **57.1%** said that they have witnessed racism in Edmonton.

### ECF VITAL Work

INDO-CANADIAN WOMEN'S ASSOCIATION (ICWA) received \$69,000 to support funding for an Executive Director through 2018-2021. This will ensure ICWA has a strong leader in place to grow its capacity and meet the needs of a growing and under-served group of people: immigrant women.

## HEALTH

### HEALTH DATA GAP ON VISIBLE MINORITIES IN CANADA



- Visible minorities are often treated as a single category, ignoring differences by race, ethnic origin, and other characteristics.

- The data gap is larger among visible minority older adults.

The research tells us that most chronic conditions are lower among visible minority women than among the rest of the female population, but self-reported general health ratings tended to be lower among visible minority women aged 15 and over than among same-aged women who were not a visible minority.

Research is important for this group because of the "healthy immigrant" effect. Canada's immigration guidelines favour healthy individuals, meaning that newcomers tend to be healthier than Canadian-born individuals. This trend does not continue over time and health becomes a factor for older adult immigrants.

## HATE CRIMES & DISCRIMINATION

### ALBERTA HUMAN RIGHTS COMMISSION

FROM APRIL 2016 TO MARCH 2017, **8% OF THE COMPLAINTS** BY INDIVIDUALS IN ALBERTA WERE DUE TO THEIR RACE/COLOUR (204 OF 2,657).

### RACIAL MINORITIES, WHETHER BORN IN CANADA OR NOT, EXPERIENCE:

- Lower incomes than non-visible minority immigrants, even after they have been in Canada for well over a decade.

- Housing discrimination. According to the Women's Economic Council, landlords frequently discriminate against immigrant women on the basis of their gender, national origin, race, the presence of children, and their employment and income status.

### IN A RECENT LEGER POLL:

**53.5%** of Edmontonians feel that Visible Minorities often face discrimination.

## SAFETY IN THE COMMUNITY

- Visible minorities report feeling less safe after dark.
- Visible minorities are *more likely* to report signs of social disorder in their community.
- Victimization rate is lower among visible minorities who report a strong sense of belonging to their community.



### VISIBLE MINORITY POLICE OFFICERS

Approximately:

**8%** OF CANADIAN OFFICERS    **14%** OF EDMONTON POLICE

### CONFIDENCE IN THE POLICE

The percentage of people who say they have confidence in the police:

**58%** OF VISIBLE MINORITIES    **68%** OF NON-VISIBLE MINORITIES

### VISIBLE MINORITY SENIORS

EDMONTON'S SENIORS ARE DIVERSE.

People aged:

65-74 **10%**    75+ **8%**  
ARE VISIBLE MINORITIES

VISIBLE MINORITY GRANDMOTHERS MORE LIKELY TO RESIDE WITH GRANDCHILDREN.

In 2011 the percentage of women (aged 45+) living with their grandchildren:

**15.0%** OF VISIBLE MINORITY WOMEN    **3.3%** OF NON-VISIBLE MINORITY WOMEN

**did you know?** On February 1, 2016, Premier Rachel Notley proclaimed February as Black History Month, recognizing the contributions people of African and Caribbean descent have made to the province.

According to the 2016 census, Alberta has the third highest black population among Canadian provinces.



# SENIOR WOMEN IN EDMONTON

## DEFINITIONS

**SENIOR OR "SENIOR CITIZEN"** In Canada there is no set age at which a person is considered a senior. Many government benefits begin at 60 or 65 years of age. However, senior discounts often start at 55.

For the purposes of this report, 65+ will denote a **senior**, and an **older adult** will refer to those aged 55 to 64, **octogenarian** will refer to those 80+.

**AGEISM** is the stereotyping, prejudice, and discrimination against people on the basis of their age.

**ELDER ABUSE** is any action or inaction by self or others that jeopardizes the health and wellbeing of an older adult.

## did you know?

- 55.6% of seniors in Edmonton are women.
- There are more women aged 65+ than there are girls aged 0 to 14 in Canada, but in Edmonton the reverse is true because it has a younger overall demographic.

## DEMOGRAPHICS OF SENIORS IN EDMONTON

AS OF 2016 THERE WERE **160 FEMALE** AND **30 MALE SENIORS 100 YEARS OR OLDER** IN EDMONTON

	MALE	FEMALE
TOTAL	<b>465,890</b>	<b>466,655</b>
55 - 64 YEARS	54,325	59,615
65 - 74 YEARS	29,475	32,375
75 - 84 YEARS	14,785	19,470
85 - 94 YEARS	5,315	9,615
95+ YEARS	305	1095

## WHY SENIOR WOMEN?

- They live longer than men and may become isolated, especially if their health deteriorates and they lack support networks.
- They have lower levels of income (experience more poverty).
- They are at greater risk of depression and dementia.
- They are more likely to experience elder abuse.



## INCOME

**PART-TIME WORK IS MORE COMMON AMONG SENIOR WOMEN.**

More seniors are working past the age of 65. In 2015, 53.2% of employed women aged 65 and over were working part-time.

**ALBERTANS ARE MORE LIKELY TO WORK FULL-TIME IN LATER LIFE THAN THE REST OF CANADA.**

**MEDIAN INCOME OF SENIOR WOMEN HAS INCREASED, BUT REMAINS LOWER THAN THAT OF SENIOR MEN.**

Although the median total income from all sources of women aged 65 and over has followed an upward trend since the mid-1970s, the median income of senior men is approximately 1.5 times higher than that of senior women.

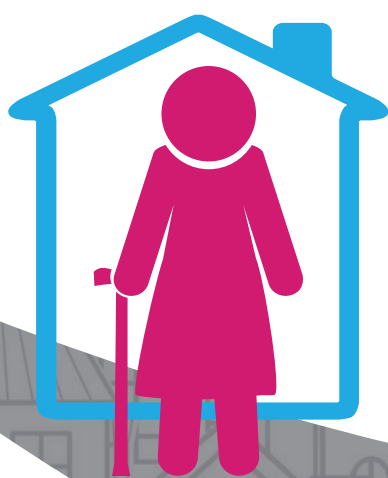
## PHILANTHROPY

Fewer seniors volunteer than do people in any other age category, but for those who do, they contribute more hours per person than any other age group.

IN EDMONTON, **50%** OF SENIORS VOLUNTEER.

## CHARITABLE DONORS

In 2013, more than half of the top 10% of donors were **55 YEARS OF AGE AND OLDER.**



## LIVING ARRANGEMENTS

In 2011, 89.9% of women aged 65 and over lived in private households, as did 94.7% of senior men, while the remaining shares (10.1% and 5.3%, respectively) lived in collective households or dwellings.

## AGING IN PLACE

Research shows older people who stay independent and age in place live longer. It's also a more cost-effective choice. In 2004, costs for community-based care per person averaged at \$8,900/year while residential care costs averaged \$30,000/year.

## HEALTH & WELLNESS

THE **LIFE EXPECTANCY** OF AN ALBERTAN AT AGE 65 IS **21.3 YEARS** (MALES) AND **24.5 (FEMALES).**

The leading causes of **DEATH** for Edmonton seniors:

### CIRCULATORY DISEASES

- Heart disease (26%)
- Stroke (6%)
- Other circulatory diseases (3%)

**35%**

### CANCER

**26%**

### RESPIRATORY DISEASES

**12%**

IN A RECENT LEGER POLL:

**34.9%** of Edmontonians feel that seniors in Edmonton often face discrimination.



The leading causes of **HOSPITAL VISITS** for Edmonton seniors:

- Injury from falls are the number-one reason seniors visited the emergency room or were admitted to hospital
- Motor vehicle accidents

## STIs IN SENIORS

ACCORDING TO HEALTH CANADA, NATIONAL RATES OF **SEXUALLY TRANSMITTED INFECTIONS** FOR PEOPLE 60+ HAS INCREASED SIGNIFICANTLY SINCE THE EARLY 2000s.

Between 2001 and 2011, chlamydia cases in people over 60 increased more than 3 times.

Chlamydia and gonorrhea increased more than 2.5 times in women over the age of 60.



## WHERE SENIORS RESIDE

NEIGHBOURHOODS IN EDMONTON WITH THE MOST:

SENIORS (65-79):

1. Oliver 2. Ottewell 3. Twin Brooks

OCTOGENARIANS (80+):

1. Kensington 2. Oliver 3. Downtown

## ENGAGEMENT & SOCIAL ISOLATION

Social isolation happens when a senior's social participation or social contact decreases.

**AN ESTIMATED 30 PERCENT OF CANADIAN SENIORS ARE AT RISK OF BECOMING SOCIALLY ISOLATED.**

According to a needs assessment of older adults in the City of Edmonton, 32% indicated there were things that make it difficult to pursue social interactions.

**18%** mentioned poor health or general poor health reasons

**17%** mentioned disability

**11%** cited financial reasons

**16%** cited feelings of isolation as the reason they felt unsafe in their community

**3%** indicated they do not socialize with anyone over an average week

**29%** indicated that they would like more acquaintances – given the opportunity



## DIVERSITY

**LGBTQ2 SENIORS** often face homophobia and discrimination when trying to access programs and services. Certain spaces may not be especially welcoming or inclusive to them.

**ABORIGINAL SENIORS** made up 5.1% of Edmonton's Aboriginal population in 2016, and 2.5% of Edmonton's Senior population.

Due to a history of discrimination, the aging experiences of Aboriginal seniors may be quite different from other seniors and may require specific programs and services to meet their needs.

**IMMIGRANT SENIORS** have varying levels of fluency in English, and this will affect their ability to participate in programs. Edmonton's immigrant seniors population is changing.

**BEFORE 2001 50%** of immigrant seniors came from Europe.

**2001-2006 73%** of immigrant seniors came from Asia and the Middle East.

**7%**

OF SENIORS SUFFER SOME FORM OF ABUSE

## ELDER ABUSE

In 2015:

**ELDER ABUSE UNIT WITH EPS CONCLUDED 48 FILES AND LAID 9 CHARGES.**

**225 FEMALE SENIOR FAMILY VIOLENCE CASES WERE REPORTED TO THE POLICE.**

## WHAT TO DO IF YOU SUSPECT ABUSE

**ACKNOWLEDGE** – Document evidence of suspected abuse.

**BARRIERS** – Address concerns of fear of retaliation, withdrawal of caregiver, and family support confidentiality.

**URGENCY** – Assess immediate risk of physical harm or if basic necessities of life are provided.

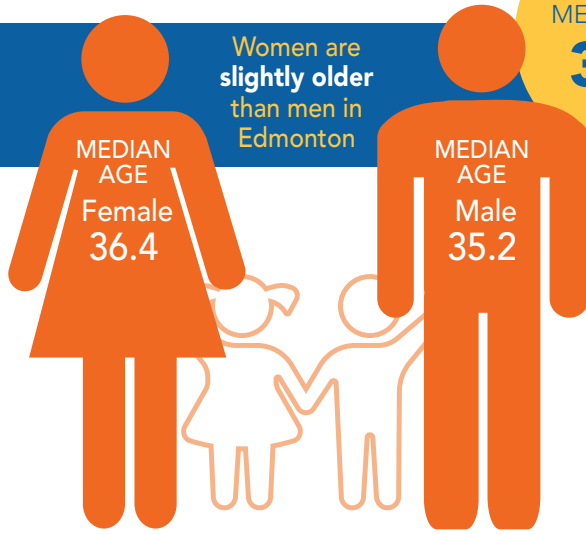
**EMPOWER** – Inform person of the right to live free of abuses and the resources available to support this. Seek help to establish a safety plan.

# LIVING IN EDMONTON

## POPULATION

Edmonton's Population (2016)  
**1,321,426**

EDMONTON'S  
MEDIAN AGE:  
**35.7**  
YEARS



## EMPLOYMENT

Average Unemployment Rate in Canada's Top 5 Metropolitan cities (Jan. - July, 2018)

	MALE (%)	FEMALE (%)
Montreal, QC	6.6	5.6
Toronto, ON	5.8	6.2
<b>EDMONTON, AB</b>	<b>7.7</b>	<b>5.6</b>
Calgary, AB	8.0	7.2
Vancouver, BC	4.5	4.0

## LIVING WAGES

EDMONTON **\$16.48** 2018

CALGARY **\$18.15** 2017

The living wage is the hourly wage A FAMILY OF FOUR must make in order to have a decent standard of living.

## CAPITAL REGION HOUSING (2016)

**5,344 families**

WERE ON THE WAIT LIST FOR HOUSING  
3,600 APPLICATIONS WERE RECEIVED

**741 FAMILIES** WERE PLACED

THE AVERAGE RENT FOR COMMUNITY HOUSING: **\$425/month**

IN A RECENT LEGER POLL:

**35.4%** Disagreed with the statement: "It is easy to find affordable housing in Edmonton." Only **31.8%** agreed.

## CORE HOUSING NEED (CMHC)

Percentage of dwellings owned or rented in the City of Edmonton (2016)

RENTED **35.7%**

OWNED **64.3%**

2-BEDROOM RENT

Oct 2014 \$1,227

Oct 2017 **\$1,215**

VACANCY RATE

1.7%

**7.0%**

From 2001 to 2016 the number of households in core housing need has increased by **61.3%**



## SCHOOL BOARD ACHIEVEMENT RESULTS:

	EPSB	ECSD	Provincial
Overall graduation rate	<b>80.6%</b>	<b>84.5%</b>	<b>77.9%</b>
First Nations, Métis and Inuit graduations in 2016-17	51.9%	58.7%	53.6%

EDUCATION LEVEL ATTAINED	2011	2016
High School <u>not</u> completed	17.5%	15.4%
<b>High School diploma or equivalent</b>	<b>26.2%</b>	<b>27.4%</b>
Apprenticeship or Trades	9.5%	8.4%
College/university certificate or diploma	22.5%	21.3%
University bachelor's degree or higher	24.4%	27.3%

IN A RECENT LEGER POLL:  
**78.5%** of Edmontonians agree that it is important to have a post-secondary education.

## EDUCATION

### EPSB

**95,642** STUDENTS, 35% require specialized and/or English language support.

### ECSD

**41,333** YOUTH and **13,000** ADULT students in a variety of education and support programs.

Provincial

## TRANSPORTATION

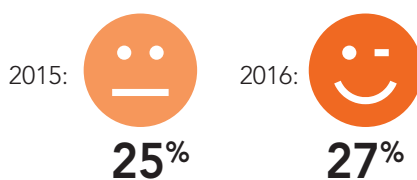
### ACCORDING TO A RECENT LEGER POLL

The main modes of transportation in Edmonton are:

	2018	2017
Car (as the driver)	66%	<b>66%</b>
Public transit (Bus, LRT)	18%	<b>15%</b>
Car (as the passenger)	8%	<b>10%</b>
Walking	5%	<b>6%</b>
Bicycling	2%	<b>2%</b>

### TRANSIT SATISFACTION

PERCENTAGE OF TOTAL SATISFACTION THAT REPORTED TO BE **EXTREMELY SATISFIED**:



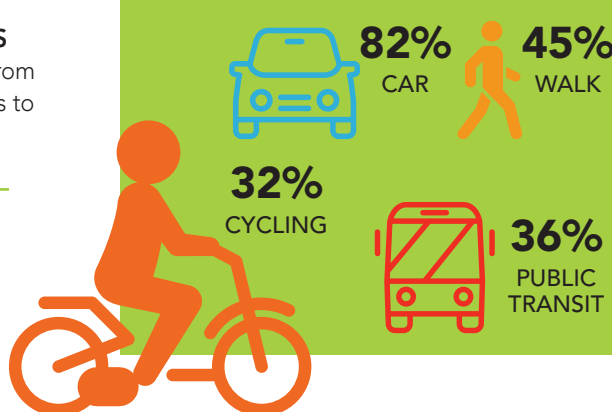
### 2017 ETS PASSENGER COUNT

Year	BUS RIDERSHIP	LRT RIDERSHIP	Total
2015	66,629,517	22,091,544	88,721,061
2017	62,377,183	24,620,283	86,997,466

Between 2013 and 2017: Bus ridership **dropped** about 7%, LRT ridership **increased** about 11%, but overall ridership went **down** about 3%.

### ACCORDING TO A RECENT LEGER POLL

Edmontonians rated the **EASE OF USING THE FOLLOWING TRANSPORTATION**:



**669,940** Potholes were filled in 2017

## CAR ACCIDENTS IN 2017

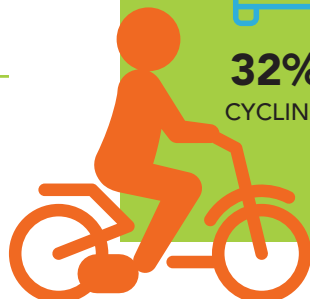
**23,906** TOTAL COLLISIONS in 2017 (up 3.3% from 2016)

COLLISIONS decreased 7.5% to 270 collisions

FATAL COLLISIONS increased from 21 fatalities in 2016 to 26 in 2017

BICYCLE COLLISIONS have fallen from 171 collisions to 143 (16.4% decrease)

### PEDESTRIAN



## POVERTY

NUMBER OF PERSONS IN LOW-INCOME STATUS HOUSEHOLDS IN EDMONTON (2016):

FAMILY TYPE	% LOW INCOME
All Family Types	10.8%
Couples	6.3%
<b>LONE PARENT</b>	<b>31.1%</b>
Other Family Types	17.8%

IN A RECENT LEGER POLL:

**60%** of Edmontonians agree that "Poverty is a significant problem in Edmonton."

**34.7%** of Edmontonians agree that "In Edmonton, adequate initiatives are in place to reduce poverty."

## HOMELESSNESS Point in Time (PiT) Count

NUMBER OF HOMELESS PERSONS: 2014 **2,307** | 2016 **1,752**

2018 **1,971**

**23 / 1,000** PEOPLE ARE HOMELESS IN EDMONTON.

**52%** SURVEYED IDENTIFIED AS INDIGENOUS.

GENDER IDENTITY OF PIT HOMELESS (2018):

**73.9%** MALE

**25.8%** FEMALE

**0.2%** TRANS GENDER

AGE GROUPS OF PIT HOMELESS (2018):

Under 18 **8.0%**

18-24 **9.4%** 25-44 **38.7%**

45-64 **39.4%** 65+ **5.5%**



**THUMBS UP/DOWN**

EDMONTON



### CUSTOMER-CENTRED COMMUNITY

**THUMBS DOWN** to the City of Edmonton for sending notice to Edmonton's Heritage Festival to vacate their storage barn, instead of working with them for a solution. Also Thumbs Down to the City of Edmonton for removing memorial plaques on benches and requesting an additional \$2,500 every 10 years for upkeep surprising loved ones that their memorial has an expiry date.

**THUMBS UP** to Mayor Don Iveson for reminding City staff that "we're all here to serve Edmontonians, to make conditions better for families, households and businesses." These two decisions were reversed until a customer-centered solution can be found.

### DOWN IN THE DUMPS

Edmonton's waste management centre has been lauded as state-of-the-art and world-class. But a recent audit revealed that **less than 50% of residential waste has been diverted from the landfill**. It was built with the goal of diverting 90 per cent of residential waste away from the landfill, but has in fact been hovering around 50 per cent for a number of years.

**Out-dated technology** is being cited for the reason for the poor record. Currently all garbage is thrown in one bag, and the quality of what can be recycled is affected. The City is looking to see what other cities do and how it can improve the system.





## FOOD SECURITY

IN A RECENT LEGER POLL:

Only **44.8%** of Edmontonians agree that "Food security is a significant problem in Edmonton."

The city currently has **80 community gardens.**

## ARTS & CULTURE

### FREE WIFI

77 Locations in Edmonton have Free Wifi provided by the City of Edmonton. More than 14,000 devices connect, resulting in more than 2TB of data traffic.

**Edmonton Public Library (EPL): 265,605** EDMONTONIANS USED THEIR LIBRARY CARD. **16.9 Million** in-person and virtual visits. **Every 2.6 seconds** someone borrowed from EPL.

IN A RECENT LEGER POLL:

**79.2%** of Edmontonians agree that "Edmonton is a city that values the arts."

**59.6%** of Edmontonians agree that technology and social media contribute to improved social connections.

IN A RECENT LEGER POLL:

**87.9%** of Edmontonians agree that "Edmonton is a culturally diverse city."

### EDMONTON'S FOOD BANK

**4 MILLION KG OF FOOD** WAS HANDED OUT IN 2017 (\$22,175,000 ESTIMATED WORTH)

IN 2017, THERE WERE AN AVERAGE OF **22,240 INDIVIDUALS** ACCESSING THE HAMPER PROGRAM PER MONTH

CHILDREN **37.7%**

ADULTS **62.3%**

Breakdown of people accessing the food hamper program:

(8,384 average per month)

(13,856 average per month)

IN A RECENT LEGER POLL:

**72.7%** of Edmontonians agree that "I trust community services such as the Food Bank or Boyle Street."

## How much does it cost for a week's worth of groceries?

IN 2018, THE AVERAGE SPENDING IS **\$231.77 PER WEEK FOR A FAMILY OF FOUR** FOR A NUTRITIOUS FOOD BASKET IN EDMONTON. IT WAS \$230.87/WEEK IN 2017.

Household food insecurity is the inadequate or insecure access to food due to financial constraints. It can negatively impact physical, mental, and social health, and cost our healthcare system considerably.

### did you know?

In 2017 you could apply to cultivate food or flowers on municipal land as part of the Vacant Lot Pilot.

## PHILANTHROPY & COMMUNITY ENGAGEMENT

In a recent Leger poll Edmontonians said they:

- 57.5%** agree it is important for them to **be involved** in their community
- 69.3%** agree that there are opportunities for them to **get involved** in their community
- 39.8%** agree that they **make an effort** to be involved in their community
- 42.2%** agree that they **feel a sense of belonging** with the community
- 21.0%** **feel socially isolated** from their community

### did you know?

In 2016, **205,310** Edmontonians submitted a charitable tax receipt, filing more than \$412,635,000 in charitable donations.

## VOLUNTEERING

HOW MANY TIMES HAVE YOU VOLUNTEERED IN THE PAST 12 MONTHS?

NOT in the past 12 months **50.9%**

1-2X 3-5X 6-10X 11-20X 21-50X 50+  
13.4% 11.2% 7.1% 5.1% 4.1% 3.5%

IN THE PAST 12 MONTHS HAVE YOU DONATED MONEY TO A CHARITY OR NON-PROFIT ORGANIZATION?

YES **66.7%** NO **30.5%**

Don't know/prefer not to answer 2.8%

IN A RECENT LEGER POLL:

**84.2%** of Edmontonians said they agree that "There are adequate opportunities for sports and/or recreation in Edmonton."

## SPORTS & RECREATION

City of Edmonton has built **4 MEGA RECREATION CENTRES:** TERWILLEGAR, COMMONWEALTH, THE MEADOWS and CLAREVIEW RECREATION CENTRE.

There were more than **4 million paid visits** to these recreation facilities in 2017.

LEISURE CENTRE ATTENDANCE (2017)

**5,852,086**

Child Minding at Recreation Centres

City of Edmonton, YMCA and Gold's Gym offer free child minding with a child or family annual membership.

### CANADIAN COMMUNITY HEALTH SURVEY

In 2015-2016, residents aged 12 and over in Edmonton, reported:

	Edmonton	Alberta	Canada
PERCEIVED HEALTH Very good or excellent	<b>64.6%</b>	65.2%	61.5%
PERCEIVED MENTAL HEALTH Very good or excellent	<b>73.2%</b>	73.7%	71.6%
PERCEIVED LIFE STRESS Quite a bit /extremely stressful	<b>21.0%</b>	21.2%	21.5%

### did you know?

**CRIME SEVERITY INDEX or (CSI)** is simply a count of all criminal incidents reported to and by police divided by the population. Each criminal incident, regardless of the type or seriousness of the offence, counts the same in the rate. For example, one homicide counts the same as one act of mischief.



## CRIME

Policing Strength per 100,000

**EDMONTON 183.2**

Calgary 168.0 | Toronto 180.5  
Montreal 228.2 | Vancouver 195.8

**CANADA 188.0**

IN A RECENT LEGER POLL:

**87.6%** of Edmontonians agree that they felt safe in their home, **80%** felt safe in their community and **73.9%** said they felt safe in Edmonton.

### CRIME SEVERITY INDEX OF EDMONTON (2017)

Compared to other major metropolitan areas in Canada (adjusted per 100,000 people)

**EDMONTON 112.3** | CALGARY 81.8 | TORONTO 48.7 | MONTREAL 58.2 | VANCOUVER 88.2

One of the reasons for Edmonton's high CSI is due to our concentration of young males (aged 20-34), who are more likely to commit crime. In 2013-14, 60% of all adults appearing in court were under the age of 35.

Most common crimes in Edmonton from March of 2015 to 2016

THEFT FROM VEHICLE 2,289 **33.8%**      BREAK & ENTER 1,422 **21.0%**      ASSAULT 1,356 **20.0%**

### TOP REASONS FOR BY-LAW INFRACTIONS FROM SEPT 2017 TO AUG 2018

Unlicensed Business • Nuisance • Snow / Ice on Walk • Weeds • Graffiti

### WONDERFUL WOMEN HONOURED

In Edmonton new names for schools honour notable women.

**Thelma Chalifoux School** (Larkspur) – Southeast Edmonton Junior High School

**Dr. Anne Anderson School** (Heritage Valley) – South West High School

**Soraya Hafez School** (McConachie) – K-6 School

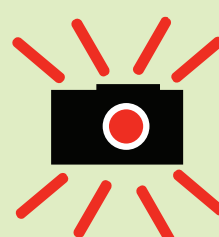
Board chair Michelle Draper said that the board picked these three from among the roughly 600 nominees suggested by city residents last December. "A school name is the highest honour a board of trustees can give an individual," she said.

### RADAR RAGE

Part of the reason Photo Radar is so hotly contested is that it is the *stick* rather than the *carrot* approach to changing behaviour. There is no warning and you receive your ticket long after you have committed the offence. In fact, since 2014, 30% of all photo radar tickets issued have been to drivers that received 3 or more tickets per year. That's why so many contend that it is not, in fact, a method to encourage a change in behaviour, but a cash grab.

### PHOTO RADAR APP

Benjamin Lavin, Computer Science student at the University of Alberta, created an app that will notify you of radar locations in Edmonton. As you're coming up to radar, it will actually give you a loud audible alert. You don't have to have your phone screen turned on. The app is available for free through the App Store and Google Play.



### TOP 5 SPOTS FOR PHOTO RADAR

The number of tickets issued in 2017 were:

<b>83 St. between Whyte Ave. - 86 Ave.</b>	<b>1036</b>
Stony Plain Rd. between 178 - 182 St.	1023
Anthony Henday Dr. - Ray Gibbon Dr.	1002
Anthony Henday Dr. - 97 St.	993
82 Ave. between 89 - 87 St.	973

# Neighbourhood NOTABLES



## DEMOGRAPHICS BREAKDOWN BY NEIGHBOURHOOD



**Most Youth**  
(Aged 0 - 19)  
The Hamptons  
Walker  
Summerside



**Most amount of licensed cats:**  
Oliver  
Alberta Ave.  
Strathcona



### NEW EDMONTON SCHOOLS ADDED IN 2018

KIM HUNG SCHOOL  
Granville  
SHAUNA MAY SENECA SCHOOL  
Walker

### Number of break and enters

(Jan. - Jun. 2018)  
Alberta Avenue 114  
Downtown 114  
Eastwood 114  
Oliver 114  
Strathcona 113

## LIBRARY

### NOTABLES IN 2018 (PER CITIZEN IN THE NEIGHBOURHOOD)

THE BRANCH WITH THE MOST VISITS:  
Enterprise Square 12.64  
Abbotsford - Penny McKee 11.01  
Highlands 8.75

LEAST VISITS:  
Londonderry 0.25  
Lois Hole (Callingwood) 3.08  
Sprucewood 3.88

MOST CHECKOUTS:  
Riverbend 9.41  
Jasper Place 9.39  
Whitemud Crossing 9.26

LEAST CHECKOUTS:  
Londonderry 0.23  
Meadows 3.45  
Sprucewood 4.26



**Most Seniors**  
(Aged 65+)  
Oliver  
Ottewell  
Twin Brooks



**Most amount of licensed dogs:**  
Summerside  
The Hamptons  
Rutherford



**Most Octogenarians**  
(Aged 80+)  
Kensington  
Oliver  
Downtown



**Total bylaw infractions**  
(Aug. 2017 - Jul. 2018)  
McCauley  
Alberta Ave.  
Downtown

### Most reported potholes to the City of Edmonton

(Jan. - Sep. 2018)  
Strathcona 183  
Oliver 171  
Downtown 168



**Most edible fruit trees on public land are:**  
Summerside 5,665  
Terwillegar Towne 4,818  
Ambleside 4,559

**Most bylaw infractions reported by citizens**  
Downtown  
McKernan  
Alberta Ave.



## FRONT YARDS IN BLOOM AWARD WINNERS

**Natural Yard First Place**  
3620 - 114 Street  
Greenfield

**Edible Yard First Place**  
14008 - 106A Avenue  
Glenora

**General Yard First Place**  
9704 - 92 Street  
Cloverdale

**Public Space First Place**  
11403 - 143 Street  
Huff Bremer Estates Industrial



## BIGGEST PARKS BY AREA

WHITEMUD PARK  
13204 Fox Dr. NW  
**3,949,337**

TERWILLEGAR PARK  
10 Rabbit Hill Rd. NW  
**1,736,951**

WHITEMUD RAVINE NATURE RESERVE  
**1,472,291**

### Fun Fact:

THE SMALLEST PARK is called 'Stony Plain F', at a mere 15.4 square metres and located in Glenora.

### did you know?

More than 30 species of mosquitoes live in the Edmonton area – and the problem mosquito is called *vexans mosquito*.



## WEIRD & WONDERFUL EDMONTON

### did you know?

- There are over 70 golf courses in metropolitan Edmonton.
- Edmonton is one of the largest cities by area in North America. It's slightly larger than the country of Cyprus in the Mediterranean.

### did you know?

- The University of Alberta has produced 67 Rhodes Scholars.
- The Art Gallery of Alberta was founded in 1924 and is the oldest cultural institution in Alberta.

**Fun Fact:** ACCORDING TO THE ZOMBIE RESEARCH SOCIETY (a real thing), Canada ranked the **second safest country** to live in during a zombie pandemic. Australia ranked number one.

They described Canada as follows: "Though its thirty-five million residents are packed along a thin strip at the country's southern border, gun ownership is common, and there's plenty of room to head north when the stuff hits the fan."

TOTAL NUMBER OF LICENSED:

Among licensed cats, the most popular breeds in Edmonton are:

Siamese  
Ragdoll  
Maine Coon

CATS  
**34,069**



PIGEONS  
**47**



DOGS  
**69,304**



Among licensed dogs, the most popular breeds in Edmonton are:

Labrador Retriever  
Shih Tzu  
German Shepherd

## CRASH COURSE IN CANNABIS

On October 17 Canada will legalize the sale of Cannabis in Canada. In Edmonton:

### For those who wish to partake, what are the laws?

- Provincial regulations restrict vaping or smoking cannabis in public places and vehicles where tobacco smoking is prohibited.
- Must be 18 years of age to purchase or consume.

### Places you won't be able to smoke:

- Within 10m of any bus stop
- By any entrance/exit, window, air intake system
- On a patio
- Children's amenities like playgrounds, outdoor pools, sports fields or off-leash areas
- Churchill Square
- The Edmonton Valley Zoo, Muttart Conservatory, John Janzen Nature Centre

### Any city-owned golf course

#### Places you will be able to smoke:

- Sidewalks (as long as you're 10m away from any bus stop, entrance/exit, window, air intake system or patio)
- Parks without children's amenities
- Walking trails
- Grass utility lines
- Any designated consumption area at a festival
- Private property (businesses/owners set own rules)
- Outside hospitals, away from doors

#### Purchasing:

- Will be able to purchase in privately run stores or government operated online stores.
- Consumers will be limited to 30 grams of cannabis per transaction, which is also the legal public possession limit.

- Cannabis cafes and lounges will not be permitted on October 17 but may be approved in the future.
- Alberta will receive the majority of the taxes collected on the product.

#### Growing:

- Under the federal legislation, adults will be able to grow up to 4 plants per household from seeds purchased from licensed cannabis retailers.
- Renters, condo-dwellers and those who live in multi-family dwellings may be restricted from growing cannabis in their homes based on rules established in rental agreements or condominium bylaws. Government will work to educate landlords, renters and condo boards on the options available to them.

#### Possession:

- Adults over 18 will be allowed to possess up to 30 grams of cannabis in a public place.
- When transporting cannabis in a vehicle, it must be secured in closed packaging and not within reach of the driver or occupants.
- Those under the legal age of 18 will not be allowed to purchase or possess any cannabis.

- This zero tolerance approach means that youth who possess more than 5 grams of cannabis will continue to be subject to criminal charges under the federal legislation.

#### Driving Impaired:

Drug-impaired driving has been a criminal offence for decades. What's new are the blood-drug concentration limits for cannabis and cannabis/alcohol combination.

### NEW BLOOD-DRUG CONCENTRATION LIMITS

BLOOD CONCENTRATION LEVEL	FEDERAL CRIMINAL PENALTY
2 nanograms (ng) per millilitre (ml) but less than 5 ng/ml THC	Maximum <b>\$1,000 fine</b> (summary conviction)
5 ng/ml or more THC **	<b>OFFENCE:</b> 1ST Minimum <b>\$1,000 fine</b>
OR	2ND Mandatory <b>30 days</b> imprisonment
2.5 ng/ml or more THC combined with 50 mg/100ml or more alcohol	3RD Mandatory <b>120 days</b> imprisonment